



NATURAL
VENEERS

By

TURAKHIA

ESTD 1992

Gradient™ Bunito

Gradient™

Bunito

Introducing **Bunito Gradient** – our signature line of 10×4 ft Gradient-Printed Textured Veneers, where material intelligence and architectural poetry converge. Each panel is pre-polished to a refined sheen, engineered to integrate effortlessly into spatial compositions without the need for on-site finishing.

Crafted across 17 distinct textures, the surfaces behave like architectural terrains—ridges, grains, and micro-contours that respond to light as if they were part of the building's own skin. Layered onto these textures are 12 meticulously developed gradient shades, each transitioning with the quiet drama of a shifting horizon.

Engineered for scale. Designed for emotion.

With Bunito Gradient, every surface becomes a luminous architectural gesture.

10x4



10x4ft panels designed to create uninterrupted visual flow across expansive walls and architectural surfaces.



Pre-Polished Finish

Arrives ready to install-no on-site polishing,
no delays, just clean execution.

17

Architectural Textures

A curated palette of surface terrains that interact with light, shadow, and spatial depth.





12

Designer Gradient Shades

Smooth tonal transitions crafted to mimic natural horizons, atmospheric shifts, and architectural lighting moods.

Shades at glance



CN-G1-Arc Page-10



CN-G2-Array Page-13



CN-G2-Runnel Page-16



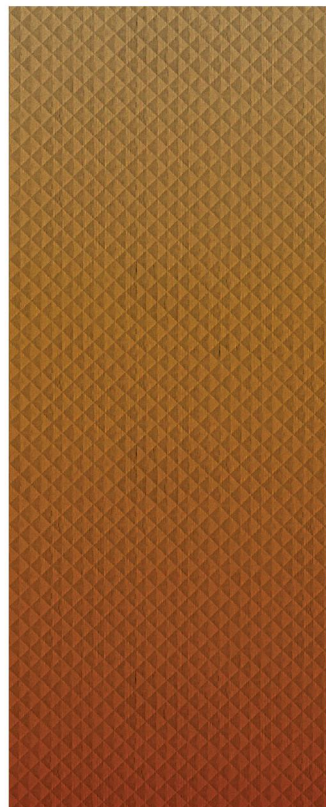
CN-G3-Crescent Page-19



CN-G4-Crude Page-22



CN-G4-Stem Page-25



CN-G5-Diamond Page-28

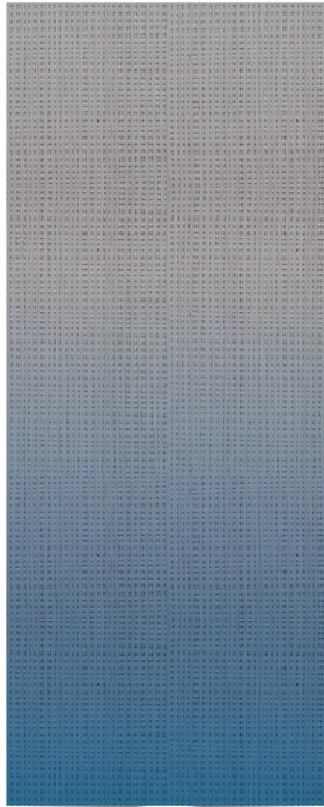


CN-G8-Frizz Page-31

Shades at glance



CN-G9-Grid Page-34



CN-G35-Jute Page-37



CN-G35-Straw Page-40



CN-G36-Mesh Page-43



CN-G36-Trellis Page-46



CN-G37-Fissure Page-49

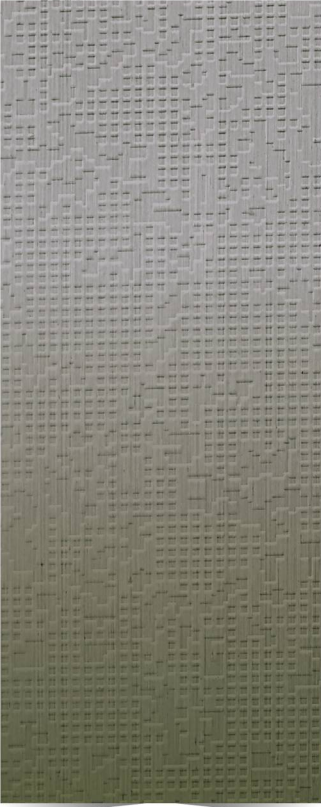


CN-G37-Motif Page-52



CN-G38-Pebble Page-55

Shades at glance



CN-G39-Qrcode Page-58

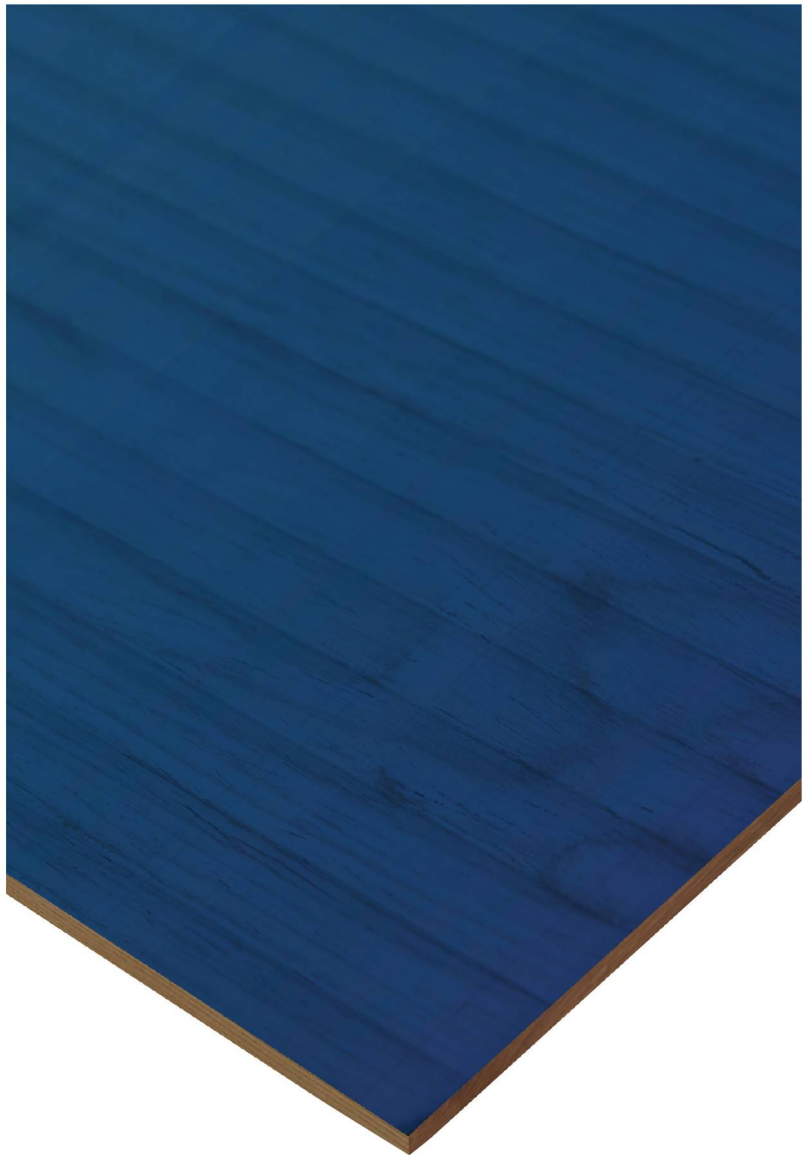
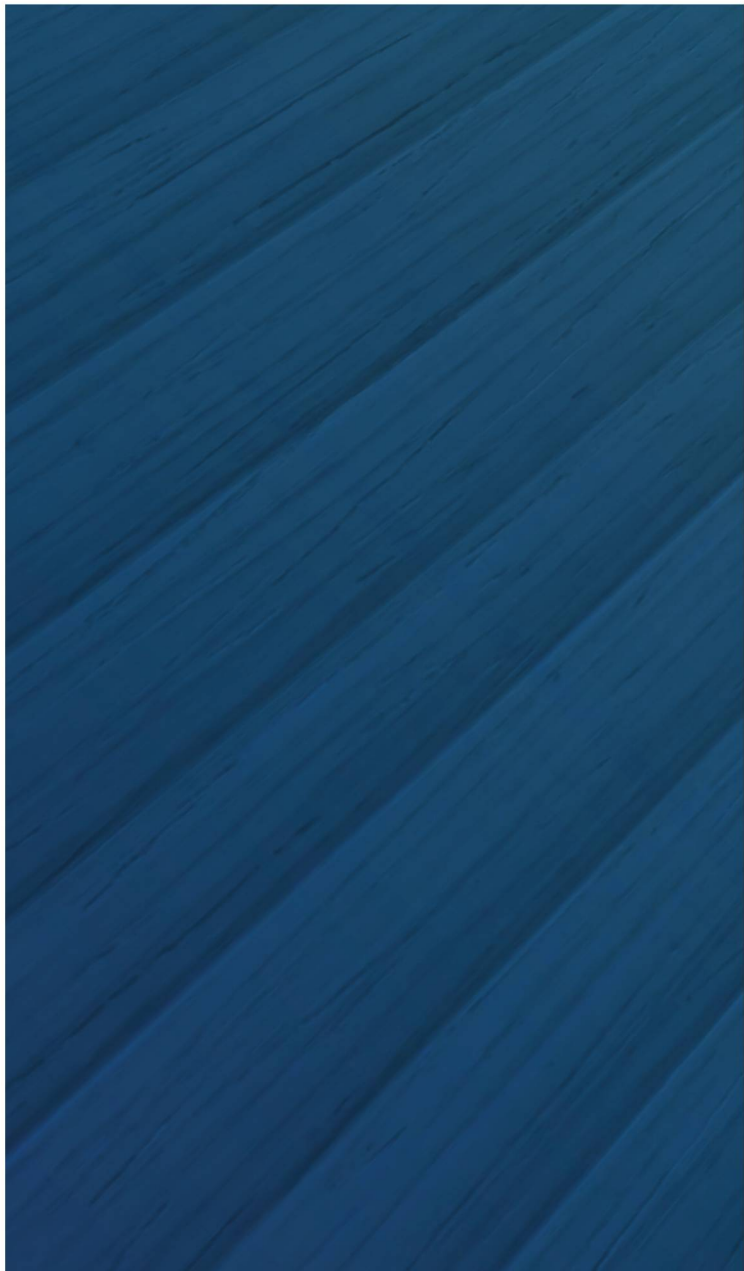
CN-G1-Arc

Technical Details

Top Layer	: 0.5 mm
Base	: HDHMR
Balancer	: 0.5mm Gurjan Back Face
Weight Per panel	: 10.5 kgs
Panel size	: 10 x 4 Ft
Flexibility	: No
Finish	: Pre-finished



Scan for
more details





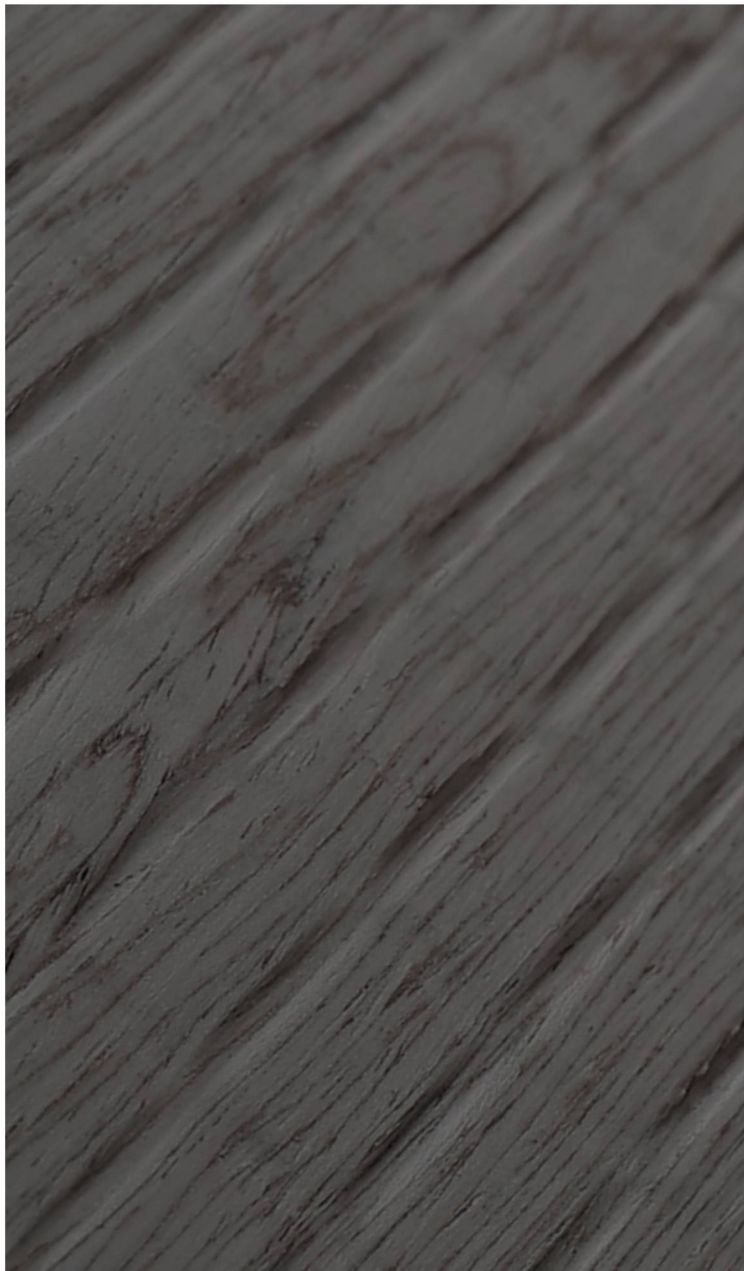
CN-G2-Array

Technical Details

Top Layer	: 0.5 mm
Base	: HDHMR
Balancer	: 0.5mm Gurjan Back Face
Weight Per panel	: 10.5 kgs
Panel size	: 10 x 4 Ft
Flexibility	: No
Finish	: Pre-finished



Scan for
more details





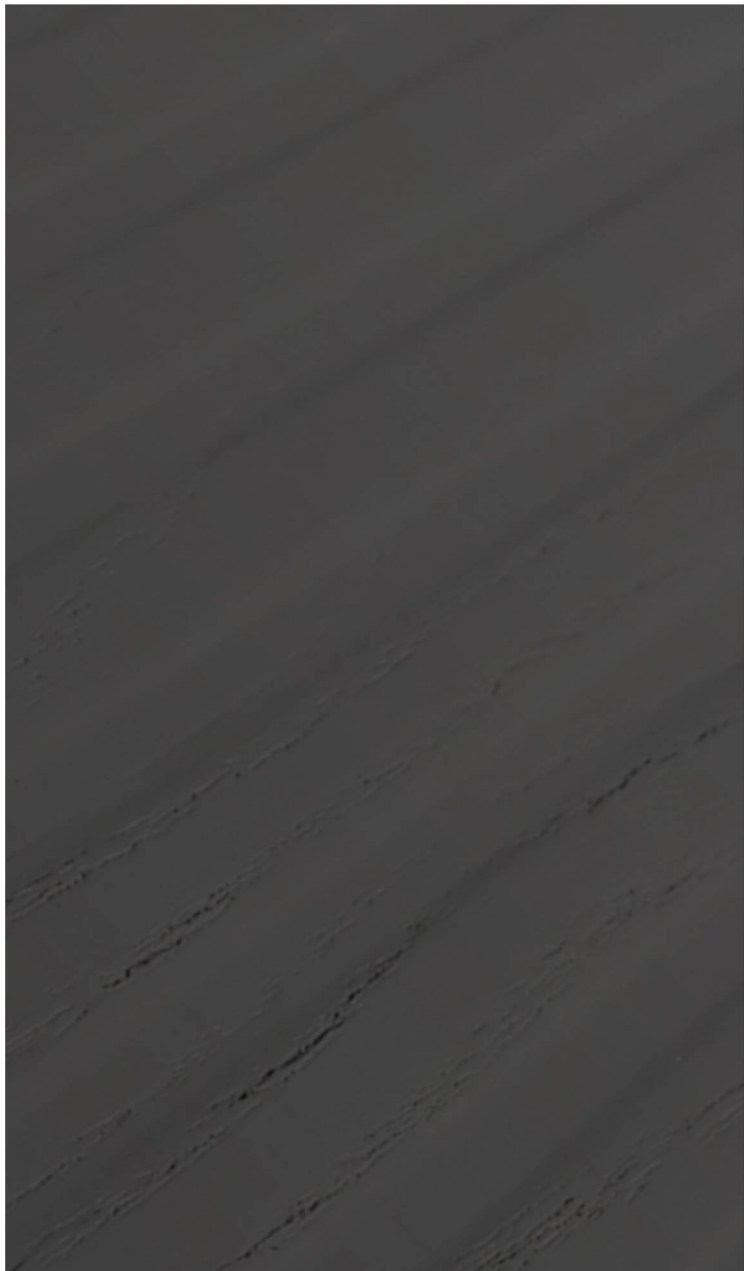
CN-G2-Runnel

Technical Details

Top Layer	: 0.5 mm
Base	: HDHMR
Balancer	: 0.5mm Gurjan Back Face
Weight Per panel	: 10.5 kgs
Panel size	: 10 x 4 Ft
Flexibility	: No
Finish	: Pre-finished



Scan for
more details





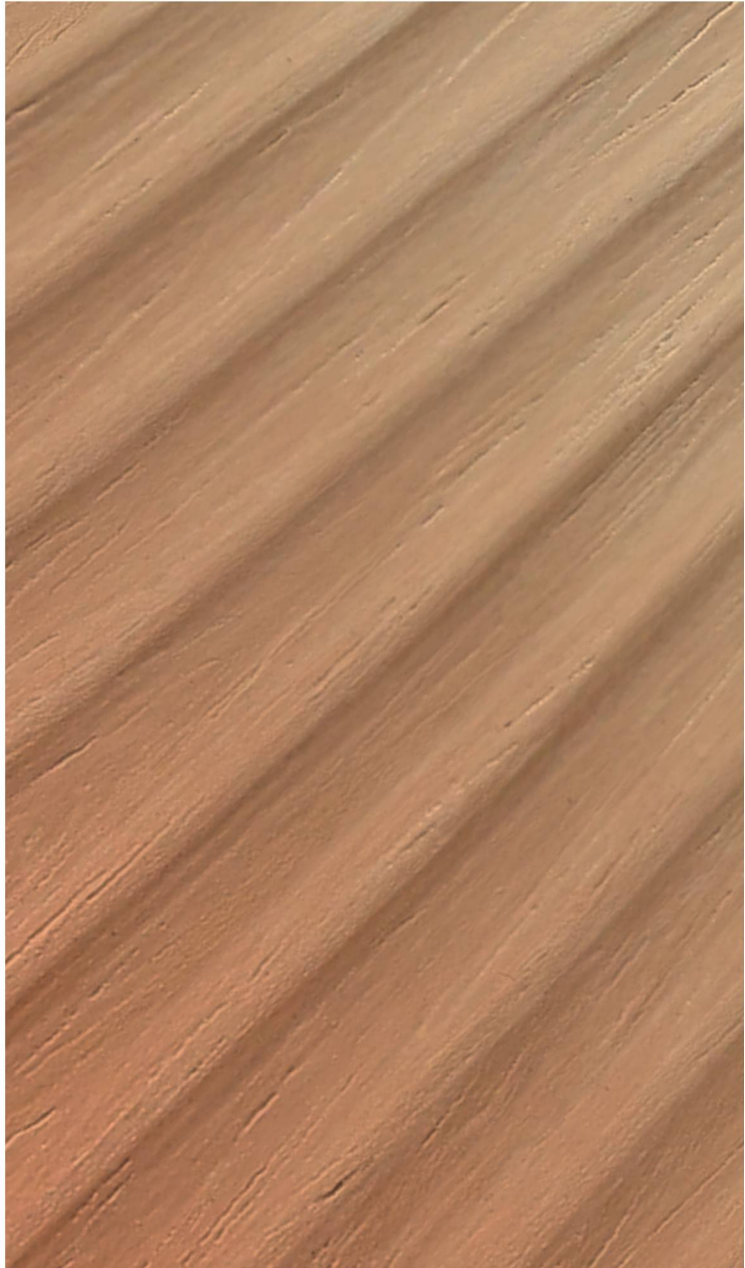
CN-G3-Crescent

Technical Details

Top Layer	: 0.5 mm
Base	: HDHMR
Balancer	: 0.5mm Gurjan Back Face
Weight Per panel	: 10.5 kgs
Panel size	: 10 x 4 Ft
Flexibility	: No
Finish	: Pre-finished



Scan for
more details







**NATURAL
VENEERS**

TURAKHIA

ESTD 1992

Gradient™
Bunito

CN-G4-Crude

Technical Details

Top Layer	: 0.5 mm
Base	: HDHMR
Balancer	: 0.5mm Gurjan Back Face
Weight Per panel	: 10.5 kgs
Panel size	: 10 x 4 Ft
Flexibility	: No
Finish	: Pre-finished



Scan for
more details







NATURAL
VENEERS

TURAKHIA

ESTD 1992

Gradient™
Bunito

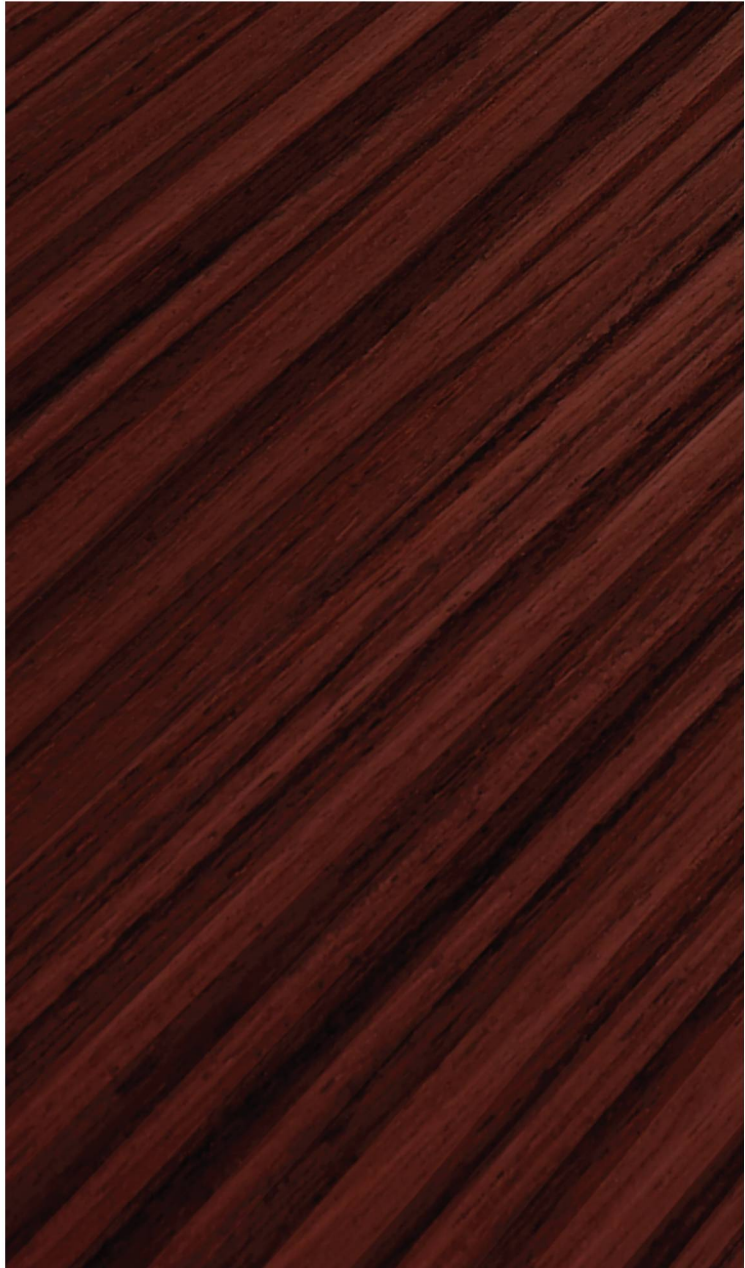
CN-G4-Stem

Technical Details

Top Layer	: 0.5 mm
Base	: HDHMR
Balancer	: 0.5mm Gurjan Back Face
Weight Per panel	: 10.5 kgs
Panel size	: 10 x 4 Ft
Flexibility	: No
Finish	: Pre-finished



Scan for
more details





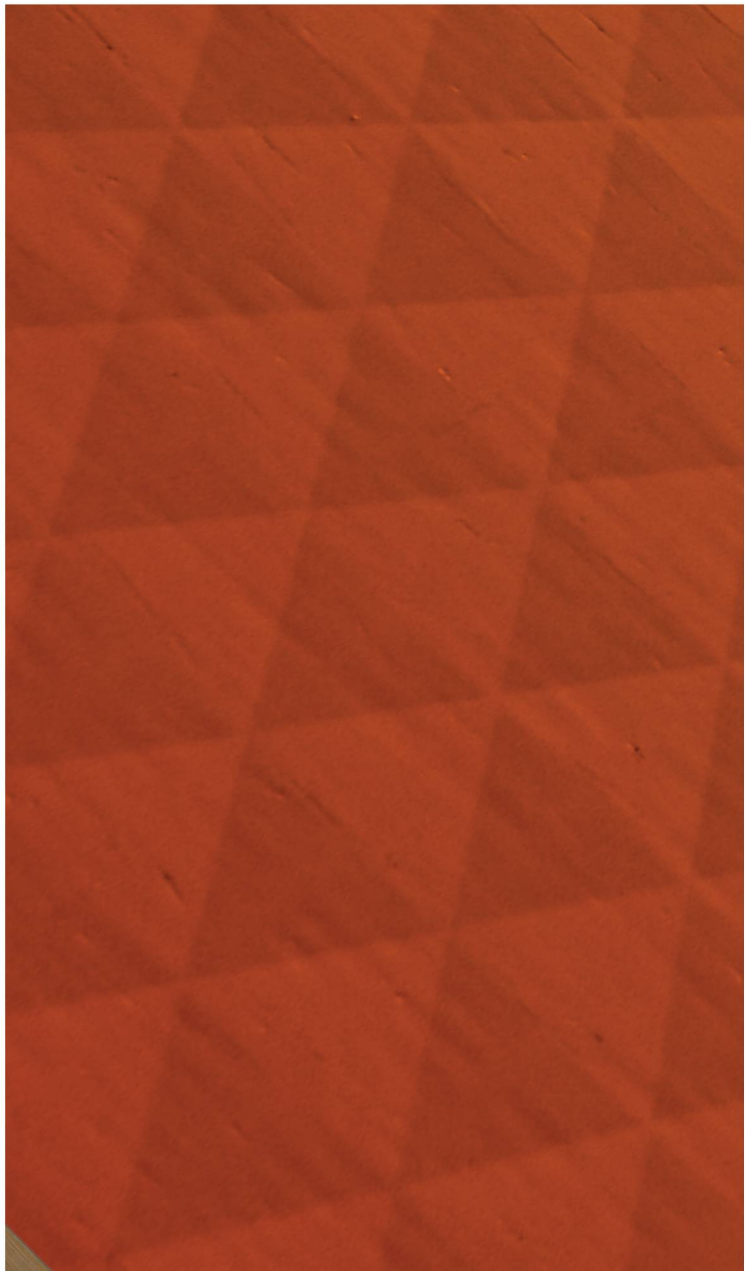
CN-G5-Diamond

Technical Details

Top Layer	: 0.5 mm
Base	: HDHMR
Balancer	: 0.5mm Gurjan Back Face
Weight Per panel	: 10.5 kgs
Panel size	: 10 x 4 Ft
Flexibility	: No
Finish	: Pre-finished



Scan for
more details





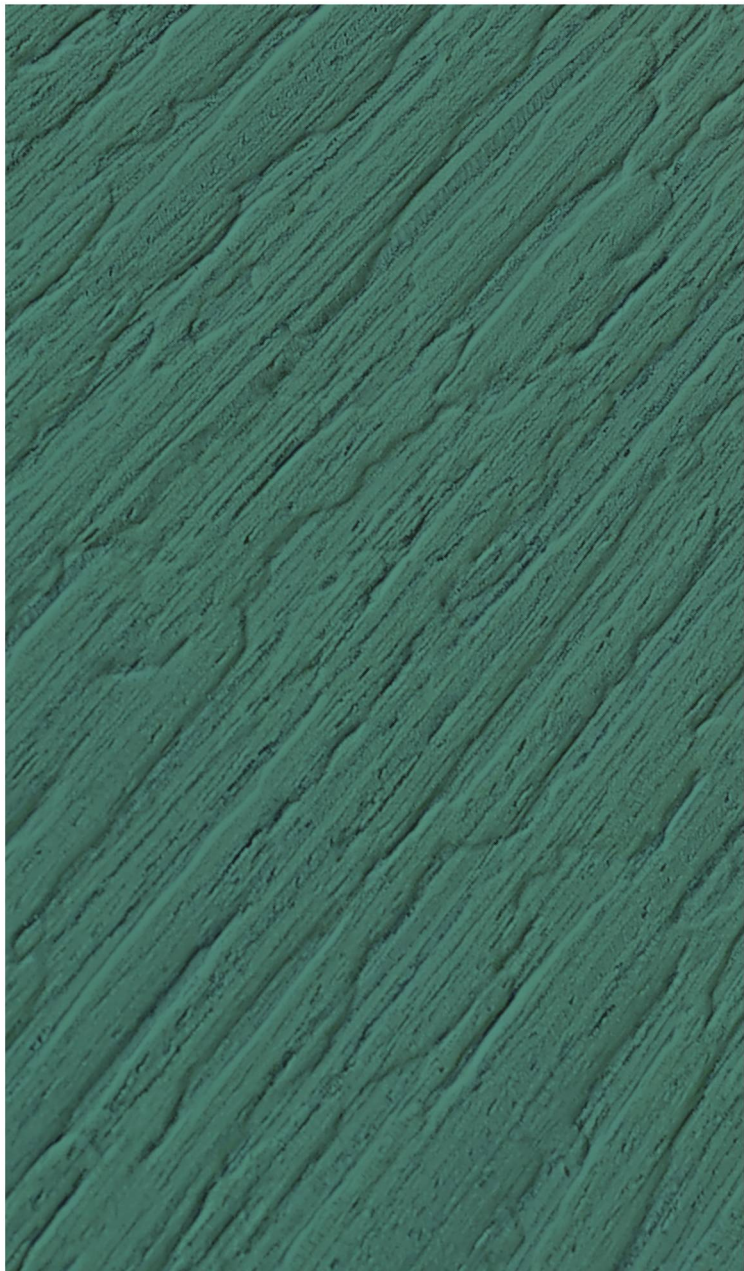
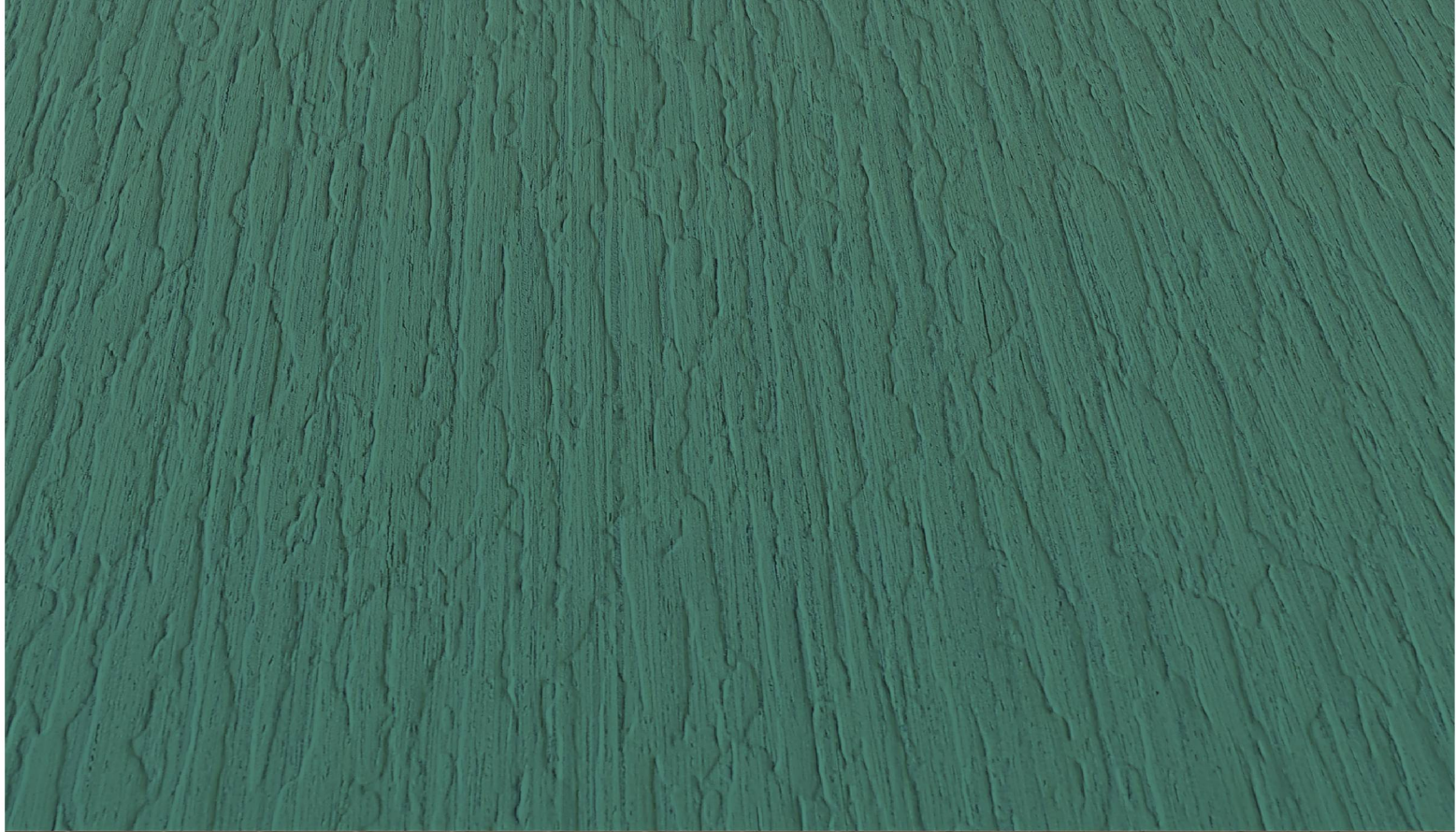
CN-G8-Frizz

Technical Details

Top Layer	: 0.5 mm
Base	: HDHMR
Balancer	: 0.5mm Gurjan Back Face
Weight Per panel	: 10.5 kgs
Panel size	: 10 x 4 Ft
Flexibility	: No
Finish	: Pre-finished



Scan for
more details





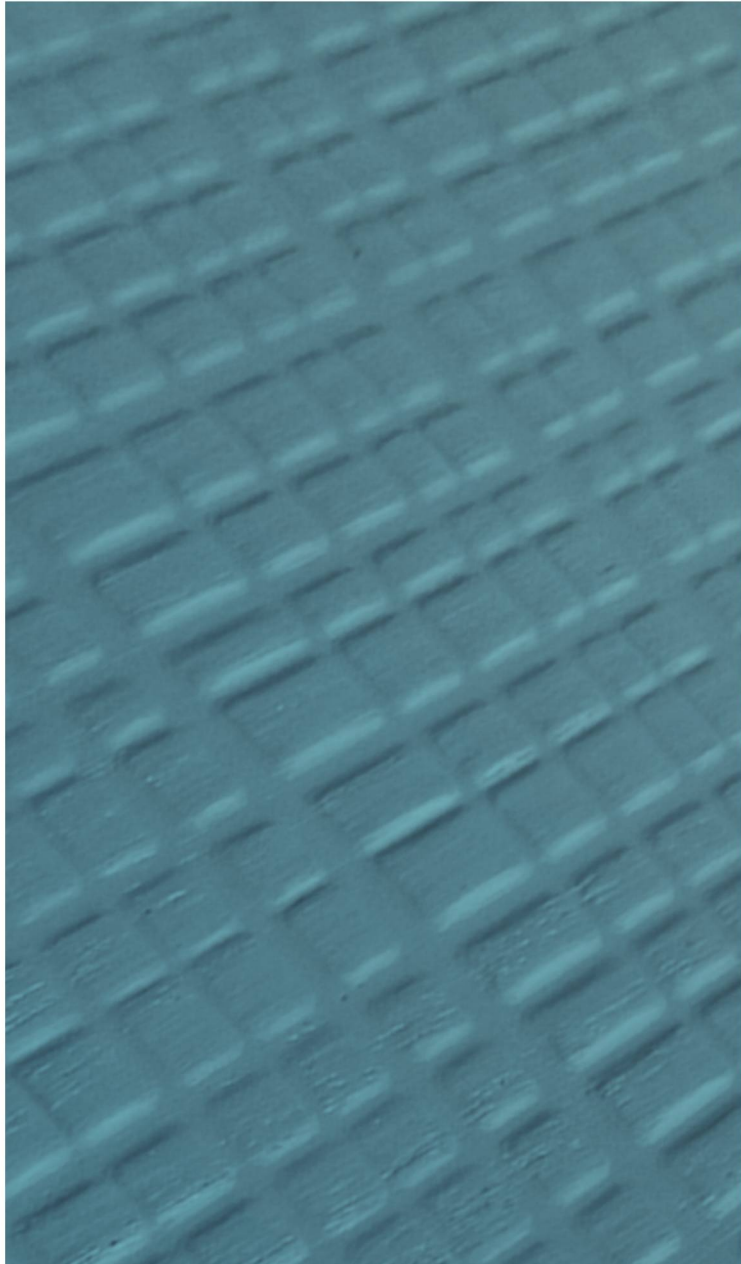
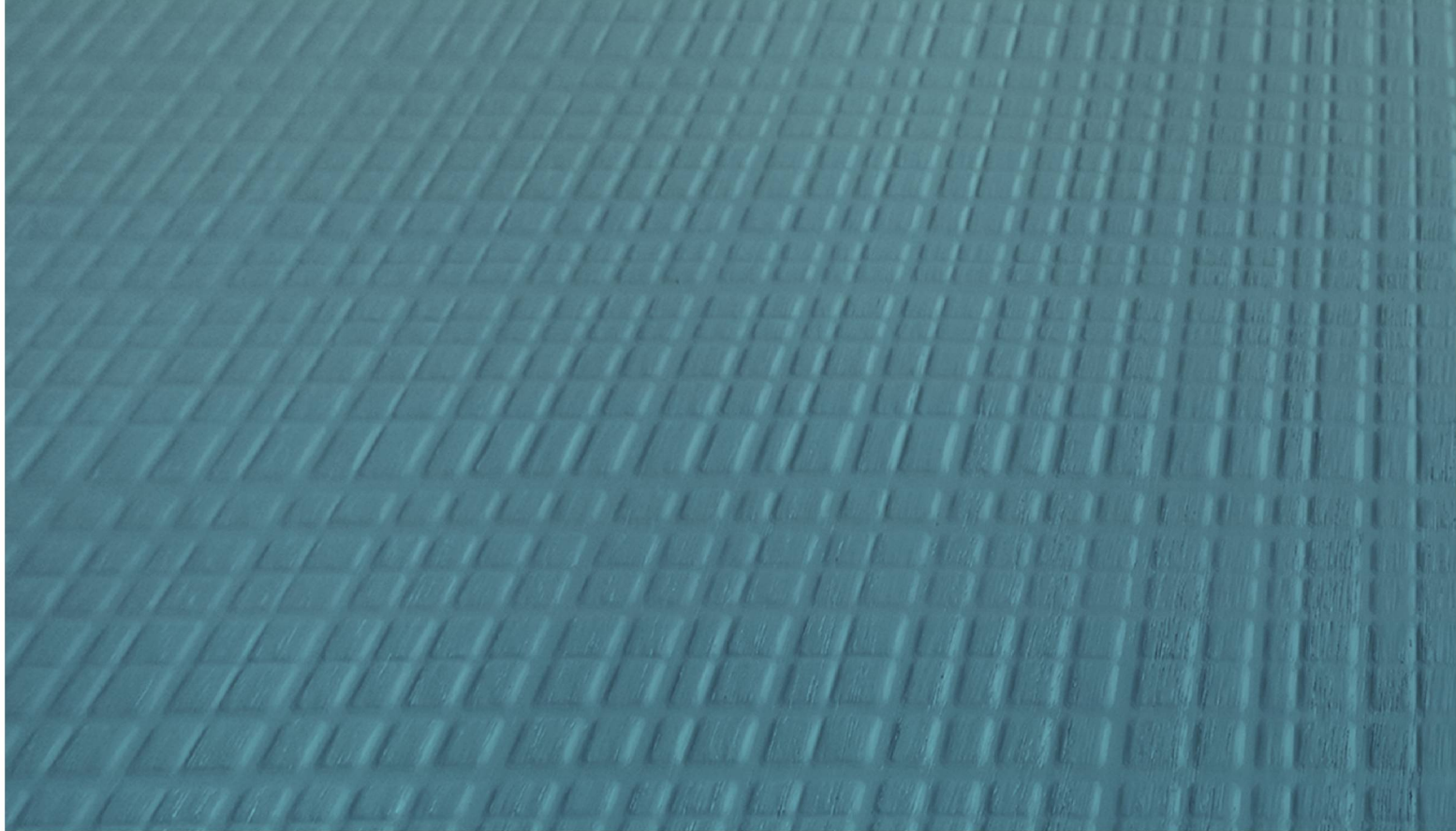
CN-G9-Grid

Technical Details

Top Layer	: 0.5 mm
Base	: HDHMR
Balancer	: 0.5mm Gurjan Back Face
Weight Per panel	: 10.5 kgs
Panel size	: 10 x 4 Ft
Flexibility	: No
Finish	: Pre-finished



Scan for
more details





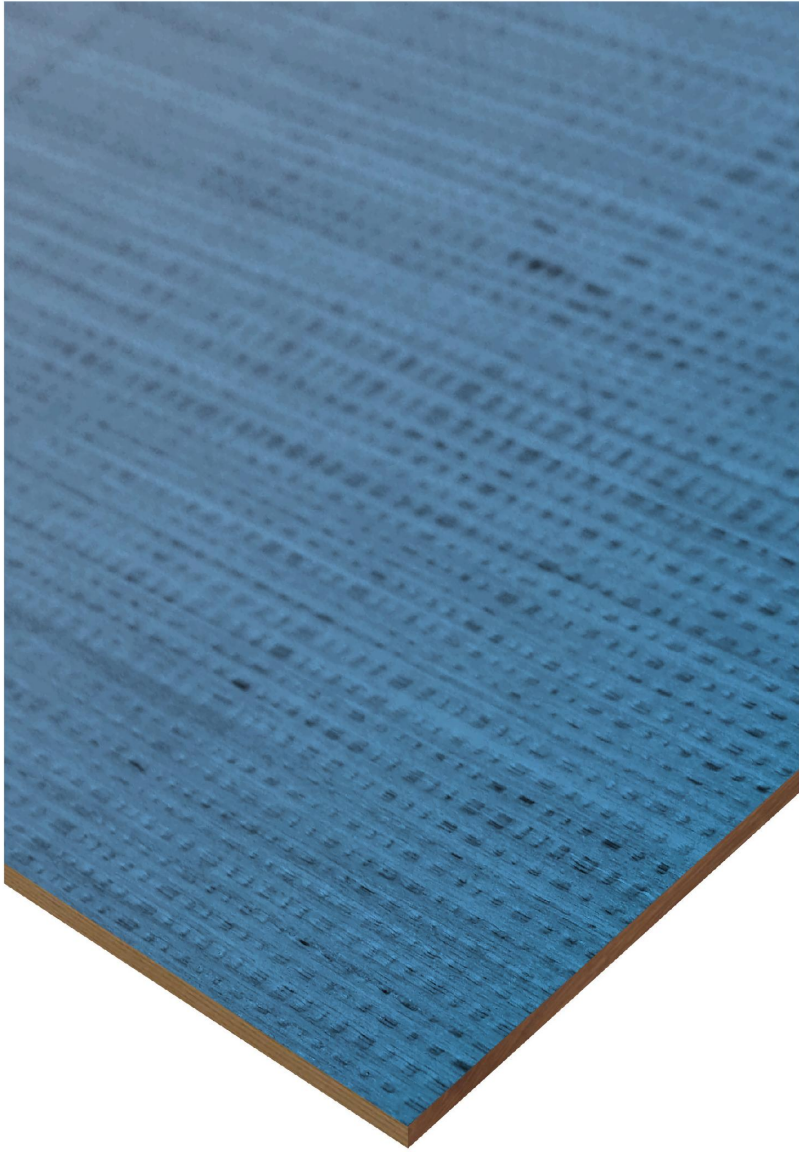
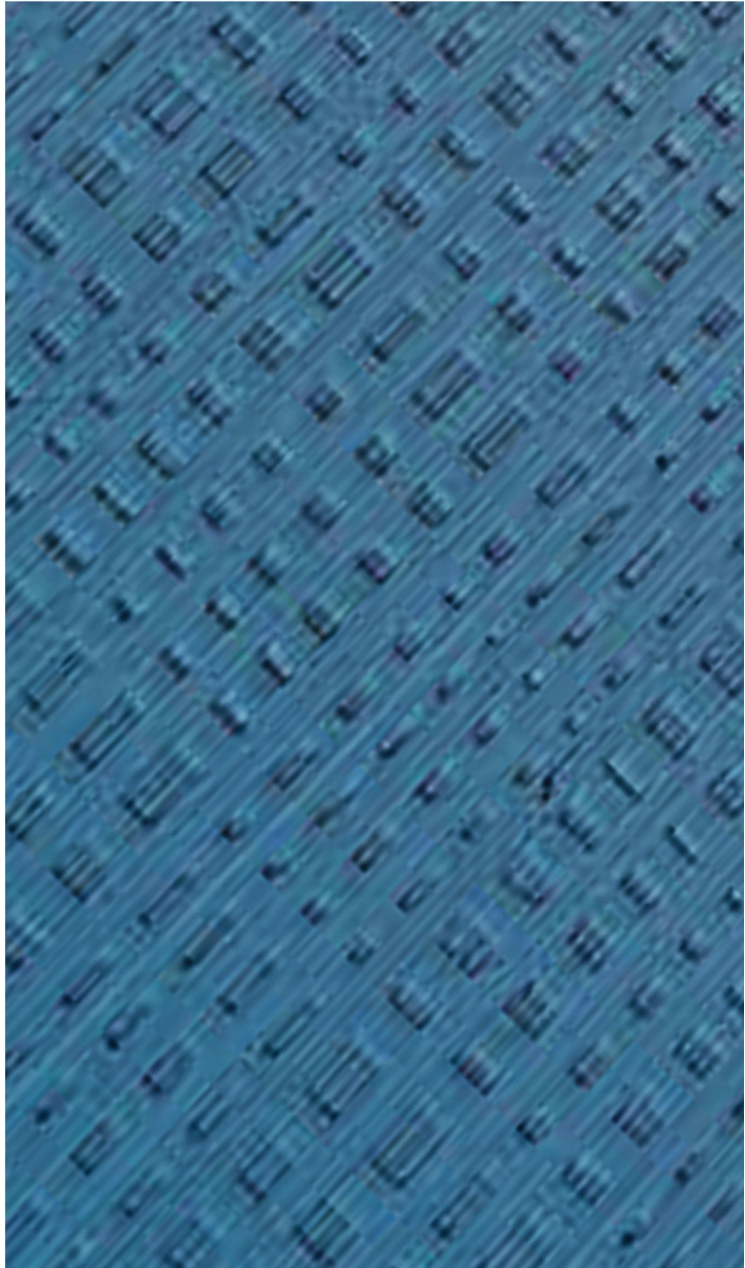
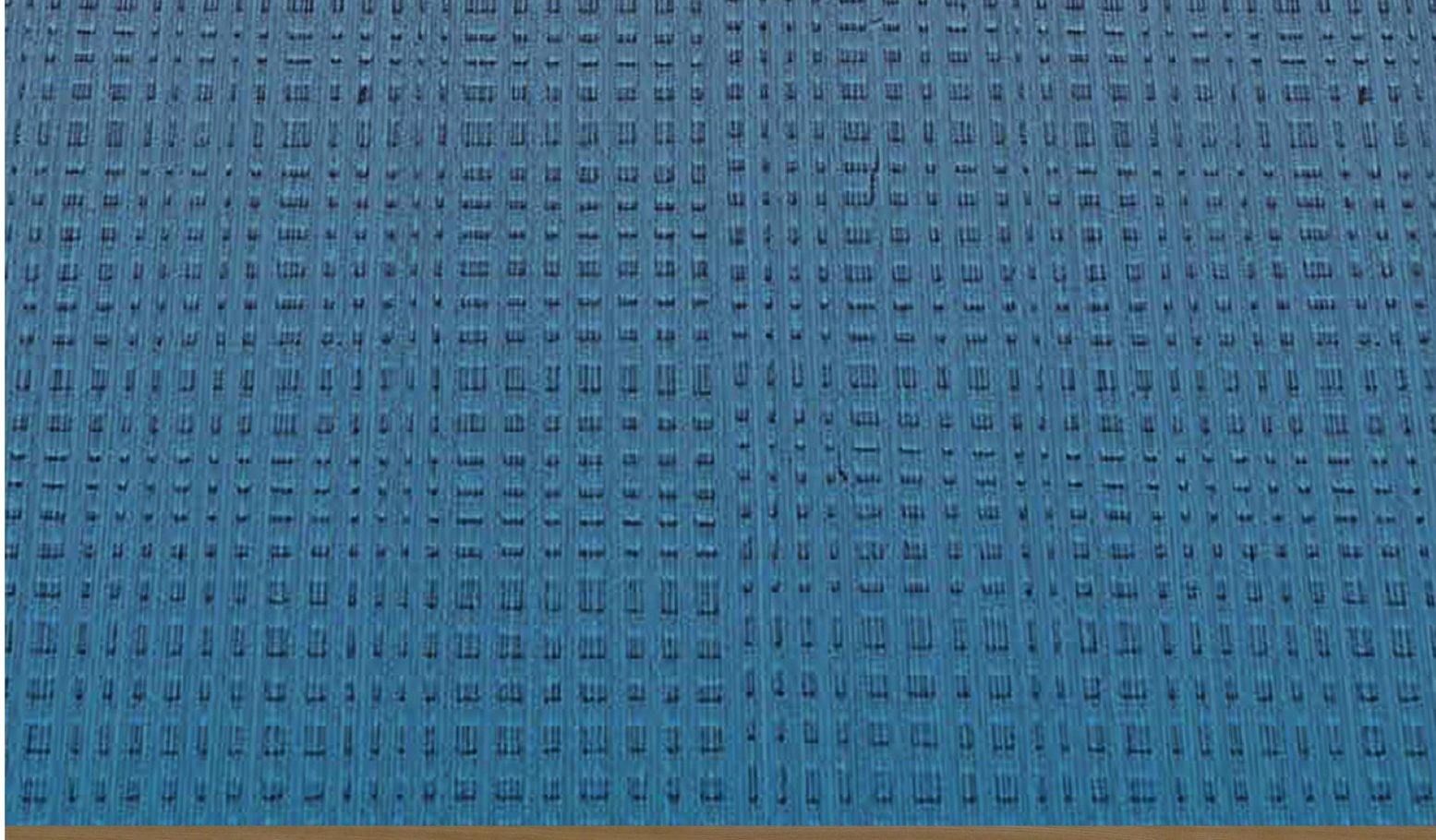
CN-G35-Jute

Technical Details

Top Layer	: 0.5 mm
Base	: HDHMR
Balancer	: 0.5mm Gurjan Back Face
Weight Per panel	: 10.5 kgs
Panel size	: 10 x 4 Ft
Flexibility	: No
Finish	: Pre-finished



Scan for
more details





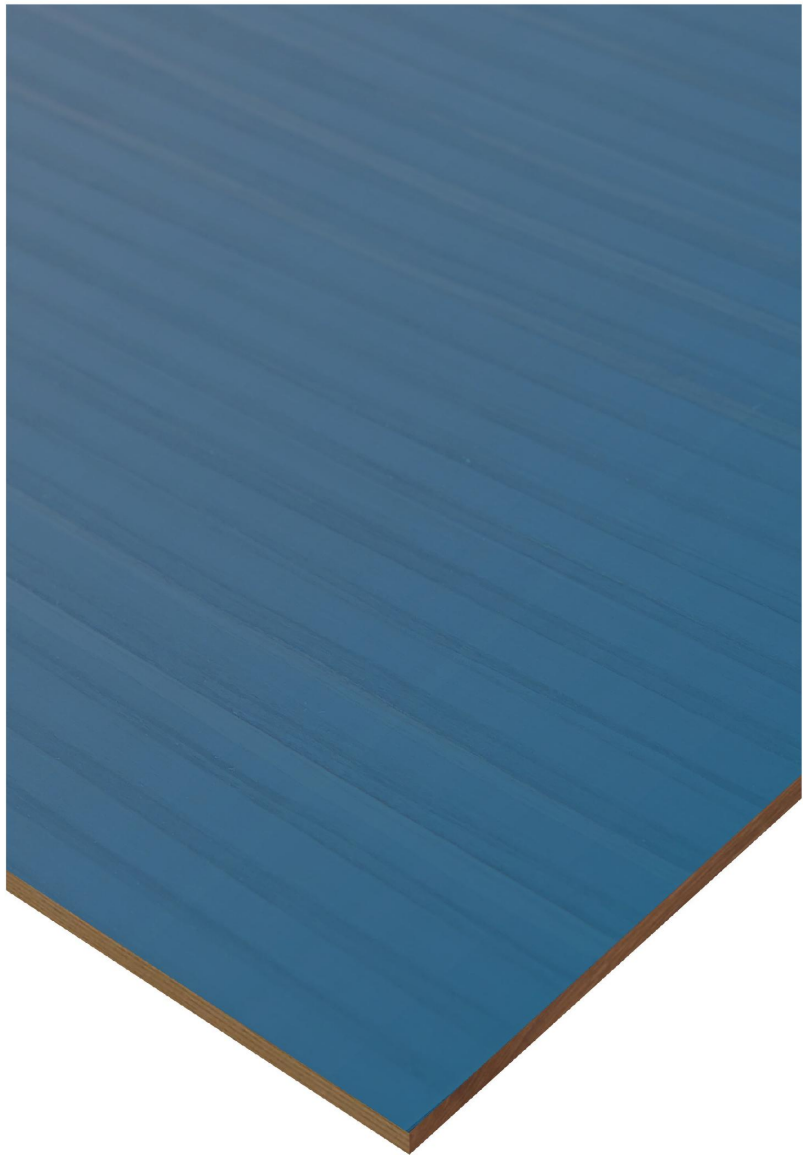
CN-G35-Straw

Technical Details

Top Layer	: 0.5 mm
Base	: HDHMR
Balancer	: 0.5mm Gurjan Back Face
Weight Per panel	: 10.5 kgs
Panel size	: 10 x 4 Ft
Flexibility	: No
Finish	: Pre-finished



Scan for
more details





CN-G36-Mesh

Technical Details

Top Layer	: 0.5 mm
Base	: HDHMR
Balancer	: 0.5mm Gurjan Back Face
Weight Per panel	: 10.5 kgs
Panel size	: 10 x 4 Ft
Flexibility	: No
Finish	: Pre-finished



Scan for
more details







NATURAL
VENEERS

By
TURAKHIA
ESTD 1992

Gradient™
Bunito

CN-G36-Trellis

Technical Details

Top Layer	: 0.5 mm
Base	: HDHMR
Balancer	: 0.5mm Gurjan Back Face
Weight Per panel	: 10.5 kgs
Panel size	: 10 x 4 Ft
Flexibility	: No
Finish	: Pre-finished



Scan for
more details





CN-G37-Fissure

Technical Details

Top Layer	: 0.5 mm
Base	: HDHMR
Balancer	: 0.5mm Gurjan Back Face
Weight Per panel	: 10.5 kgs
Panel size	: 10 x 4 Ft
Flexibility	: No
Finish	: Pre-finished



Scan for
more details





CN-G37-Motif

Technical Details

Top Layer	: 0.5 mm
Base	: HDHMR
Balancer	: 0.5mm Gurjan Back Face
Weight Per panel	: 10.5 kgs
Panel size	: 10 x 4 Ft
Flexibility	: No
Finish	: Pre-finished



Scan for
more details







**NATURAL
VENEERS**

By
TURAKHIA

ESTD 1992

Gradient™
Bunito

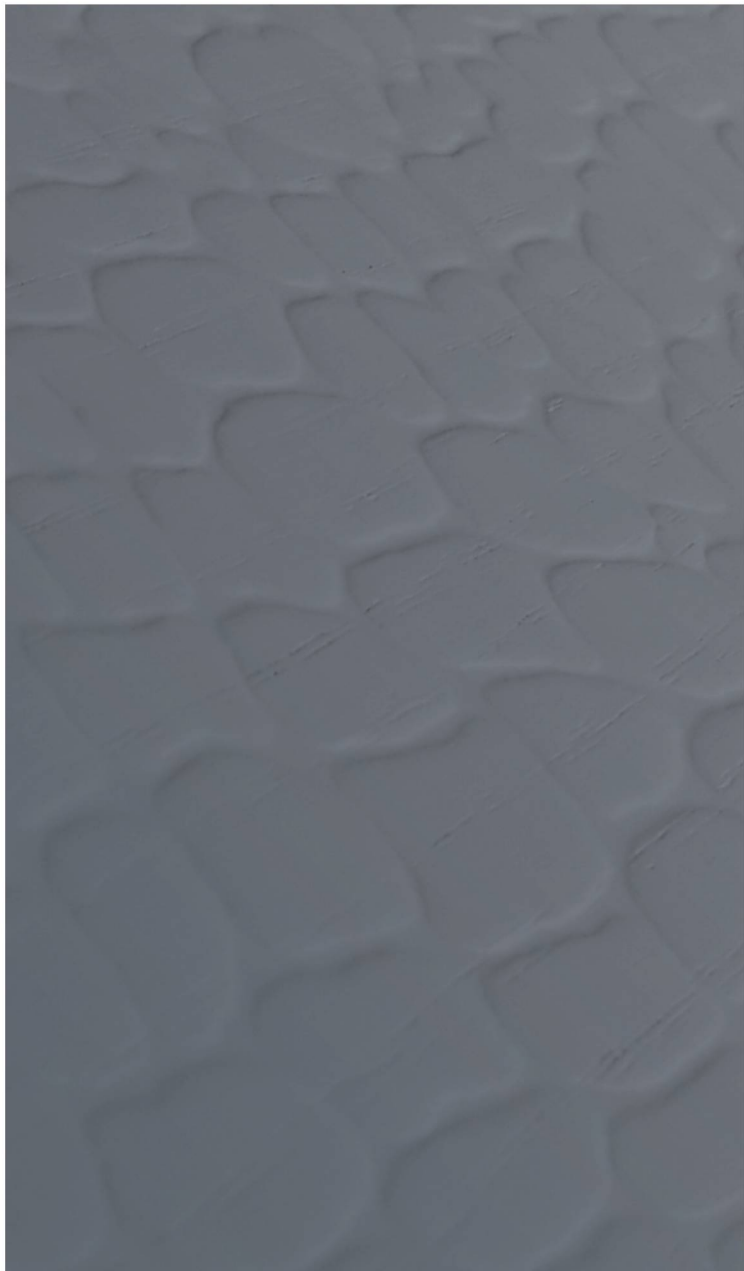
CN-G38-Pebble

Technical Details

Top Layer	: 0.5 mm
Base	: HDHMR
Balancer	: 0.5mm Gurjan Back Face
Weight Per panel	: 10.5 kgs
Panel size	: 10 x 4 Ft
Flexibility	: No
Finish	: Pre-finished



Scan for
more details





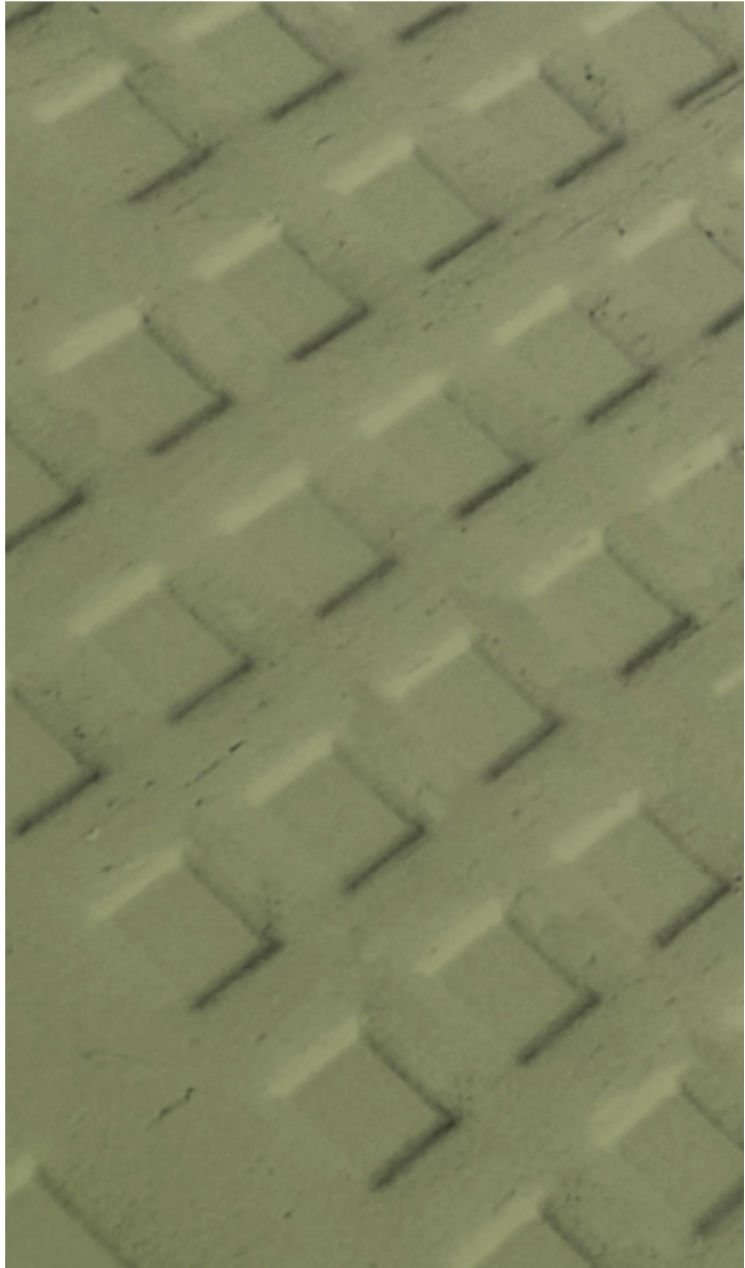
CN-G39-Qrcode

Technical Details

Top Layer	: 0.5 mm
Base	: HDHMR
Balancer	: 0.5mm Gurjan Back Face
Weight Per panel	: 10.5 kgs
Panel size	: 10 x 4 Ft
Flexibility	: No
Finish	: Pre-finished



Scan for
more details








Scan me


TURAKHIA OVERSEAS PRIVATE LIMITED ESTD 1992

 /naturalveneers

 /naturalveneers


 /naturalveneers


 /naturalveneers

 /naturalveneers

 /company/natural-veneers

 +91-91364 60666

 info@naturalveneers.com

 www.naturalveneers.com