



NATURAL  
VENEERS

By

TURAKHIA

EST<sup>d</sup> 1992



FURROW  
FUSION

TM

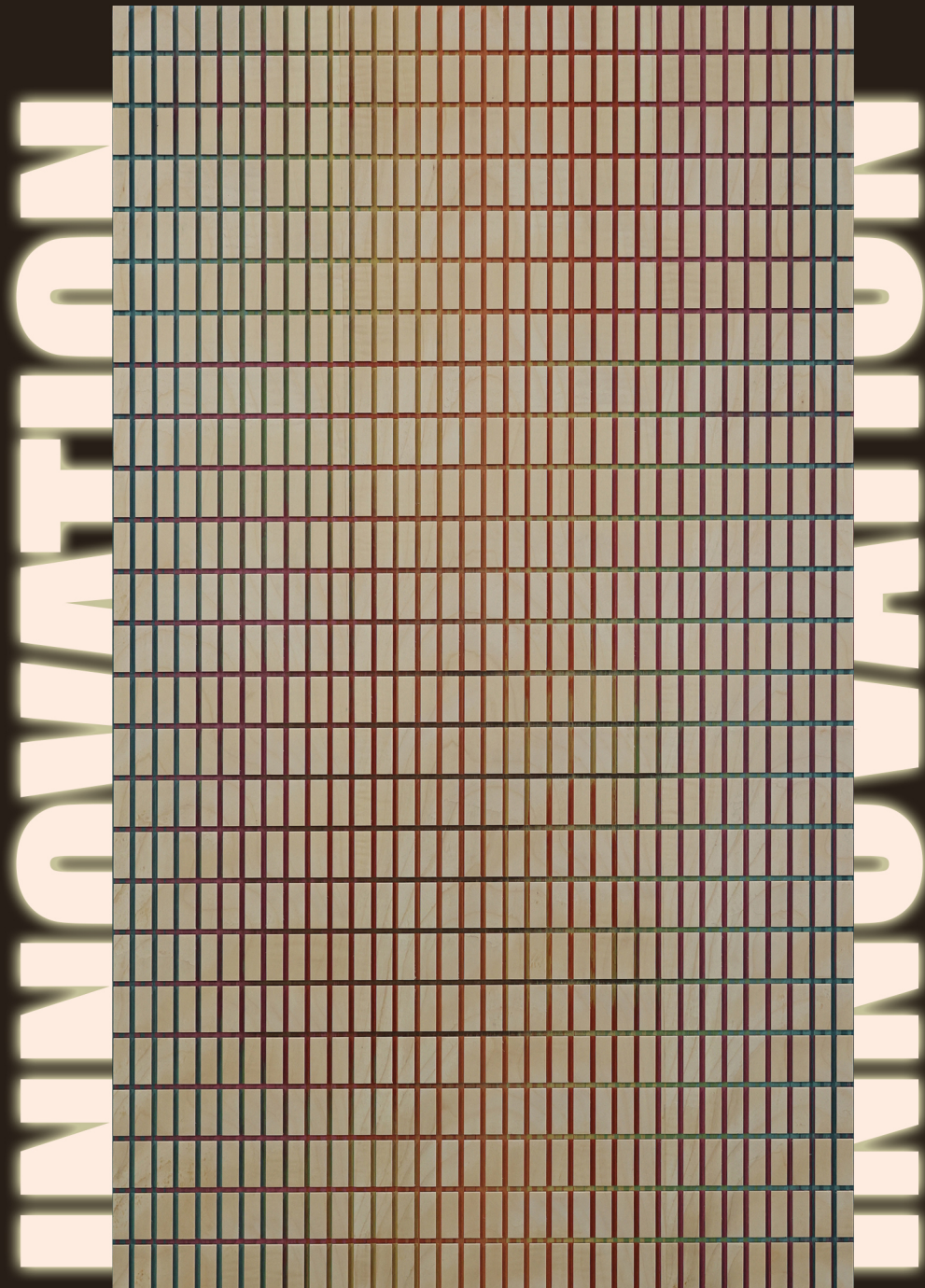


Solid wood fluted panels have been in high fashion since recent years, but as innovators, we had to go beyond definition of the regular flute concept, and here we are, presentation FURROW FUSION, a stylish innovation in fluted panels which involves usage of multiple wooden species. These panels are storytelling elements in spatial design. By blending the organic appeal of wood with the refined characters. Designers can craft interiors that are both visually engaging and emotionally resonant. This fusion approach continues to grow in popularity as it balances function, beauty, and innovation.

# INNOVATION



**INNOVATION** has no boundary.  
**FURROW FUSION** is an example of the same.





Each **DESIGNED**  
**STRUCTURE & LAYER**  
gets a **FRESH MEANING**  
with **DIFFERENT WOOD USED.**

This concept enhances  
**VISUAL DEPTH & CREATES  
A STRIKING PATTERN.**

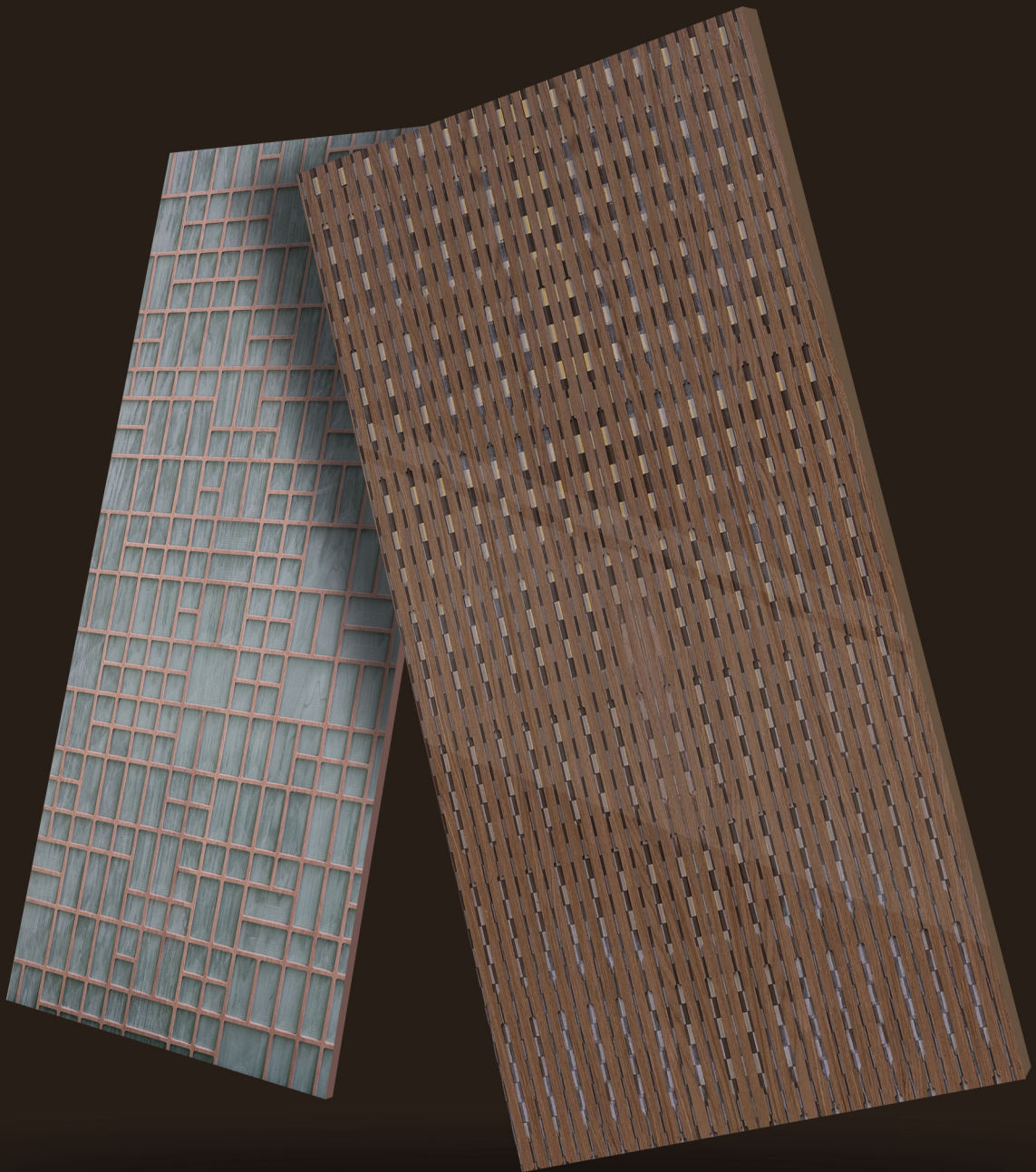


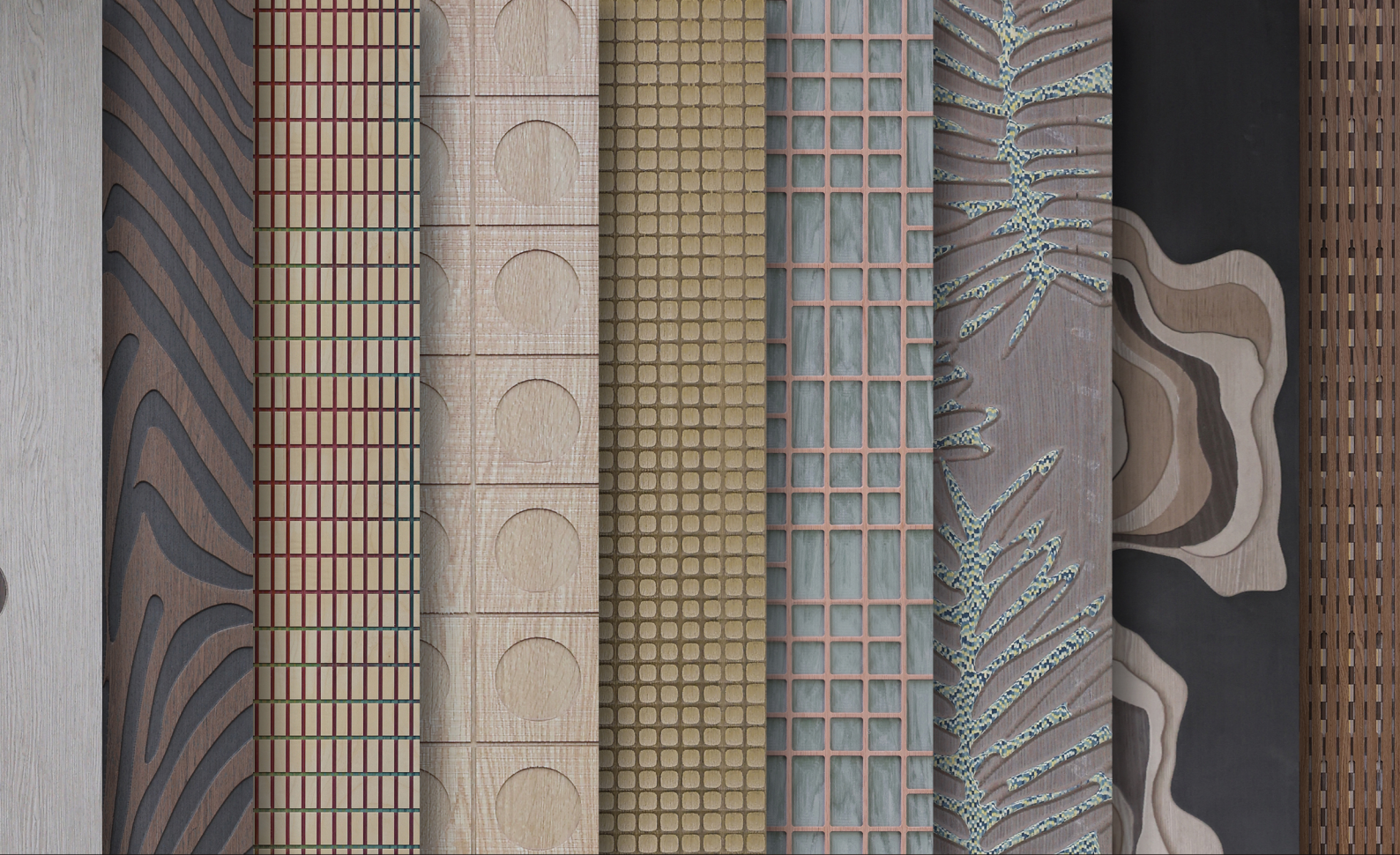
**CUSTOMISATION**  
is possible.



# PRE-FINISHED

Available in **PRE-FINISHED**  
form on request.

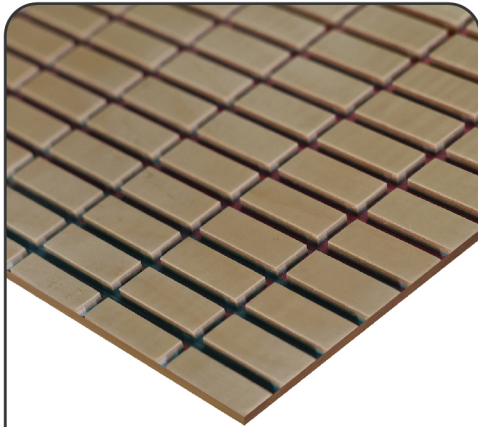




## 9 Unique Design



# Designs At Glance



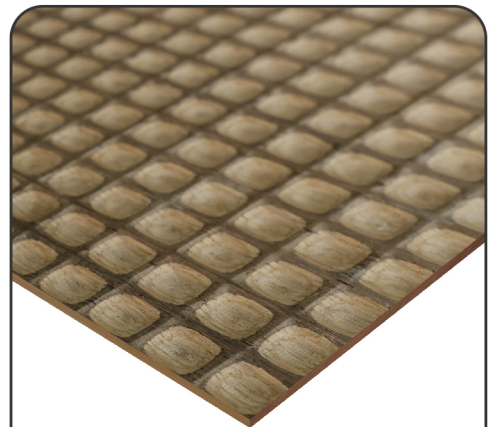
C12-FF

PAGE-10



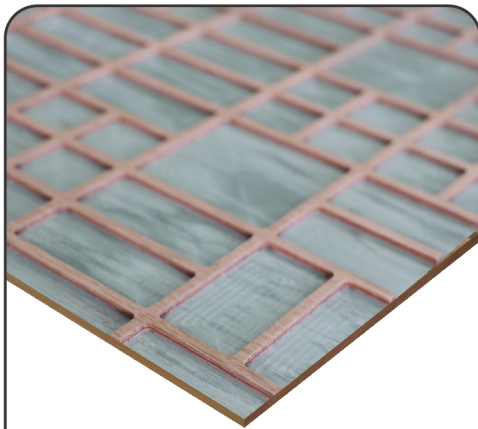
C16-FF

PAGE-13



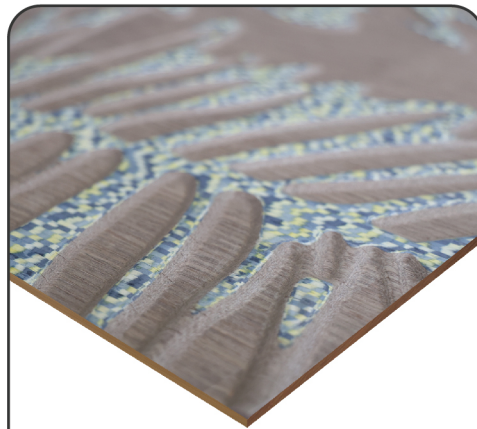
C112-FF

PAGE-16



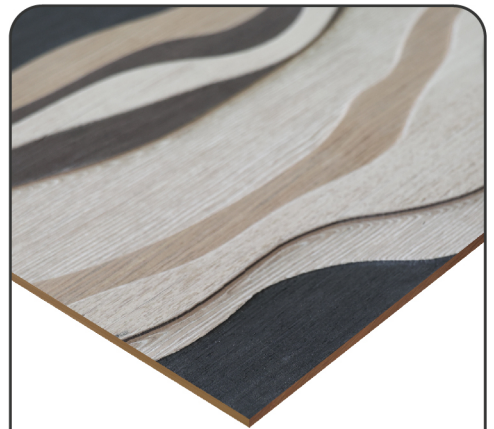
C116-FF

PAGE-19



C137-FF

PAGE-22



C178-FF

PAGE-25



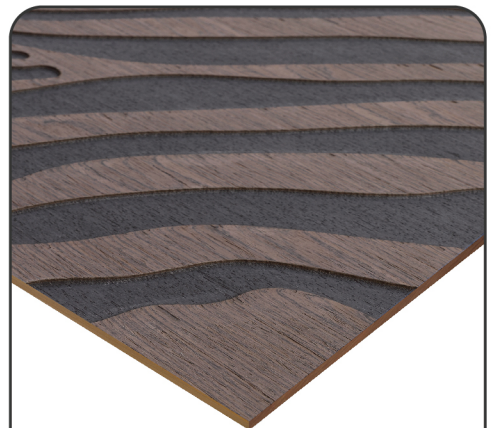
D005-FF

PAGE-28



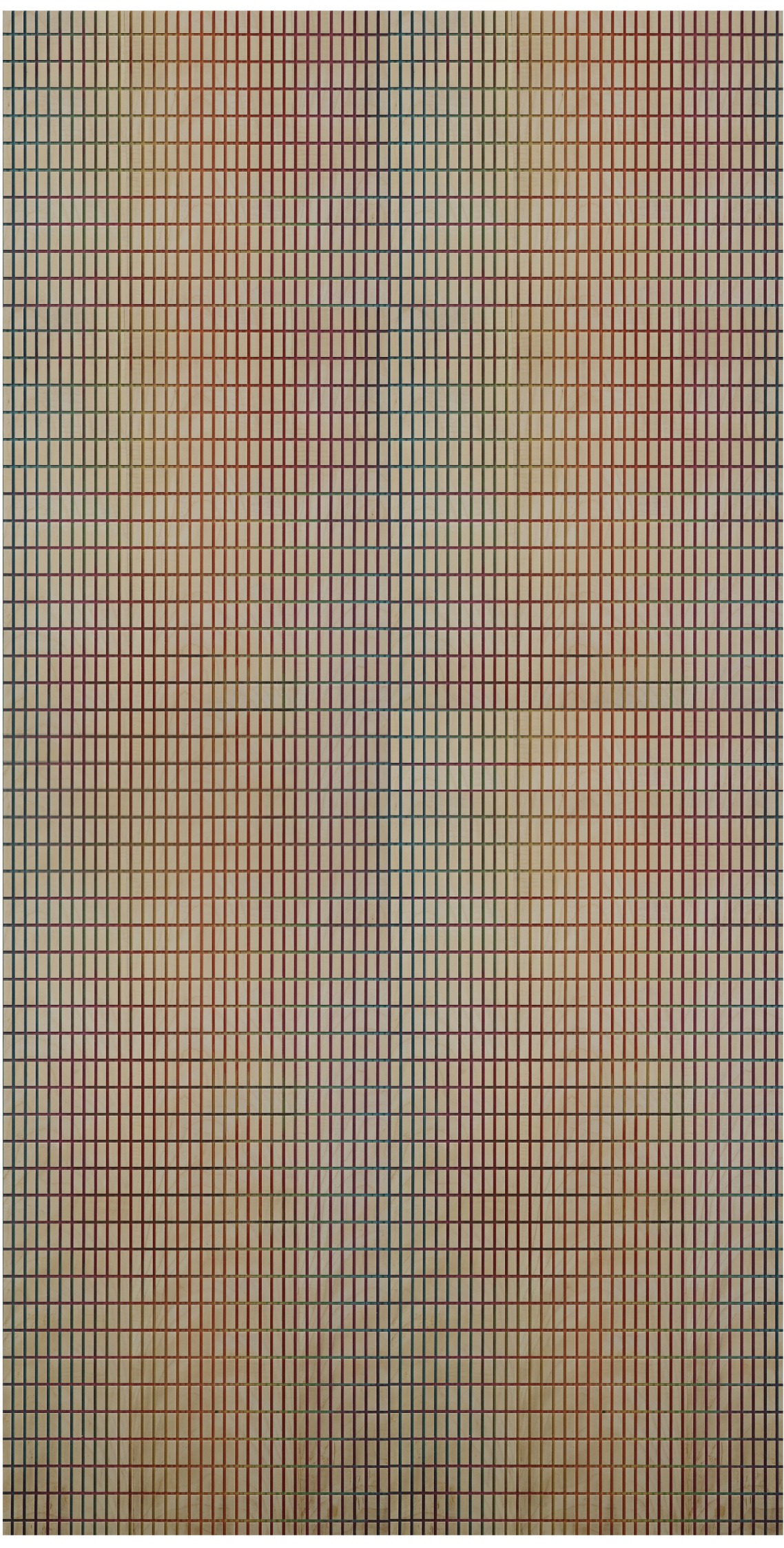
C213-FF

PAGE-31

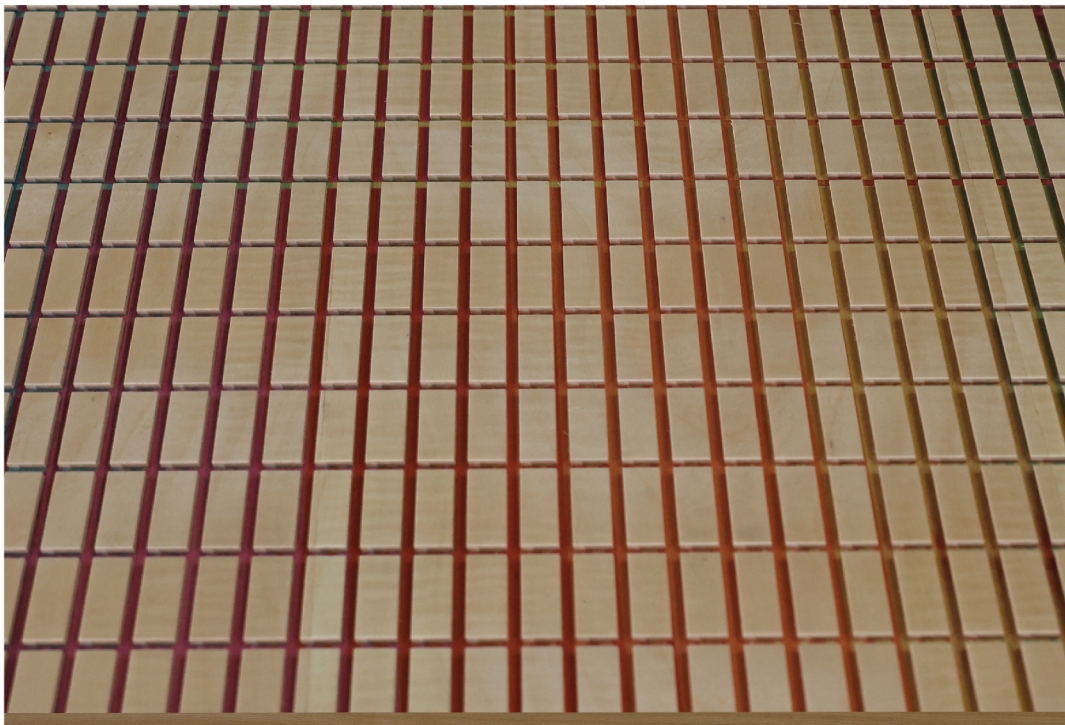


C280-FF

PAGE-34



**C12-FF**



## Technical Details

Wood Veneer Specie : Natural Hybrid

Veneer Layer : 5 MM

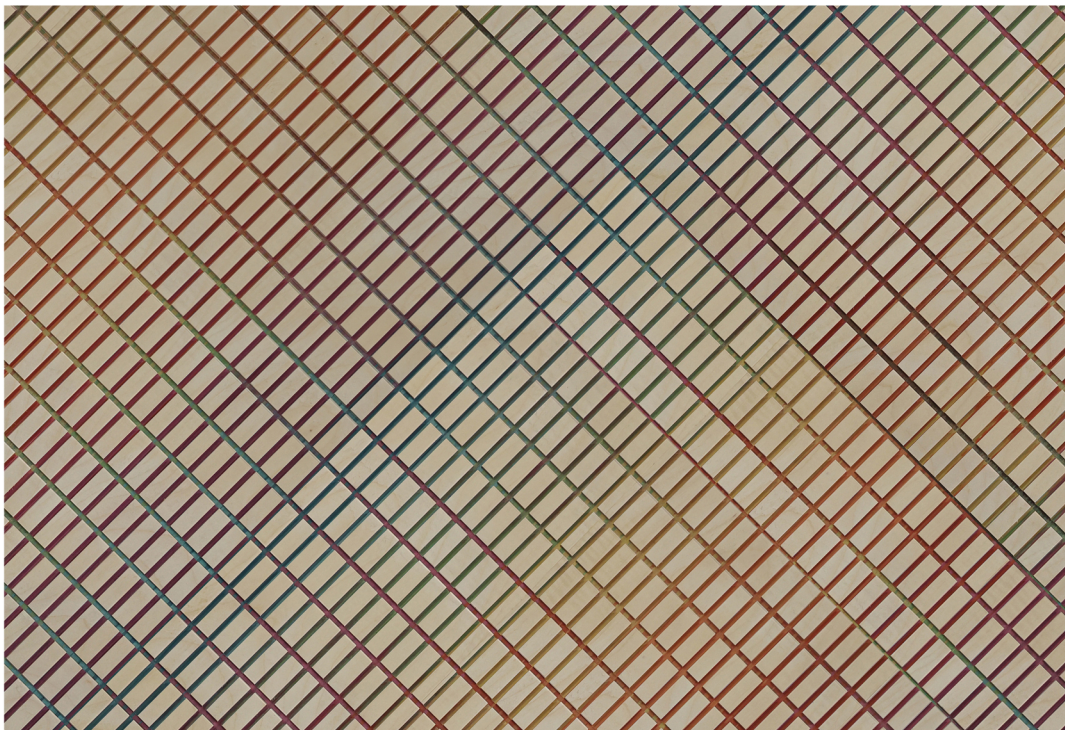
Base : Plywood  
Flexible Fleece

Weight : 24 kgs

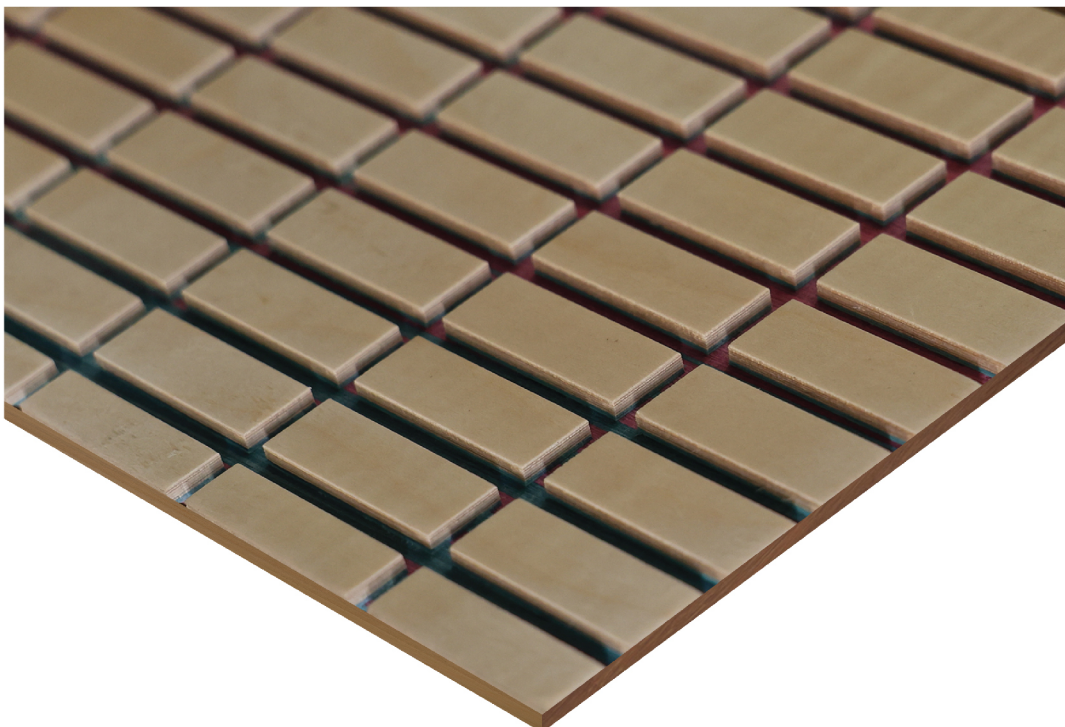
Panel size : 8 x 4 Ft

Finish : Pre-Finished  
on Demand

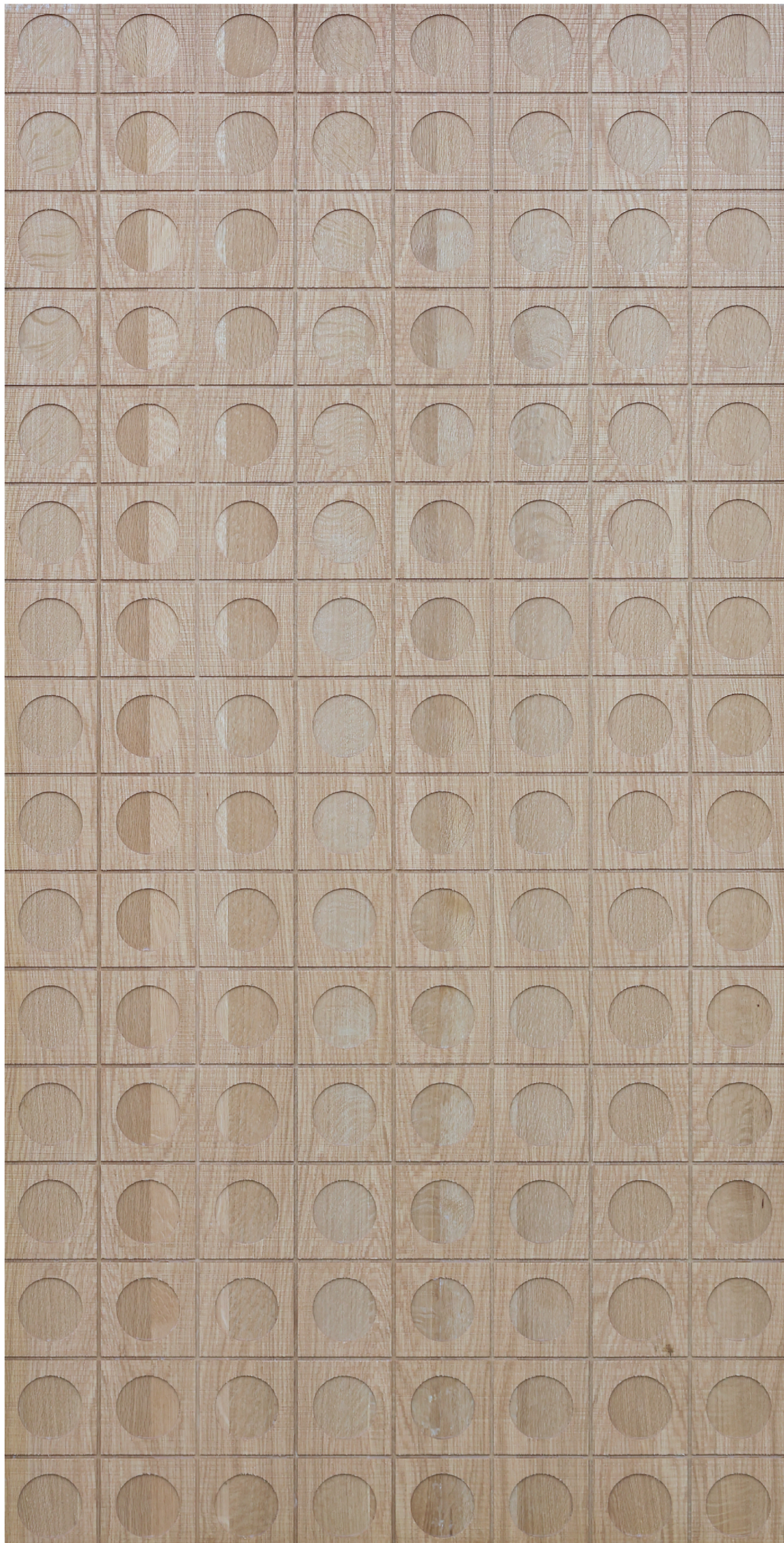
Formats : Plain Flexible



Scan for  
more details







**C16-FF**



## Technical Details

Wood Veneer Specie : Natural

Veneer Layer : 5 MM

Base : Plywood  
Flexible

Weight : 24 kgs

Panel size : 8x4 ft 10x4 ft  
12x4 ft

Finish : Pre-Finished  
on Demand

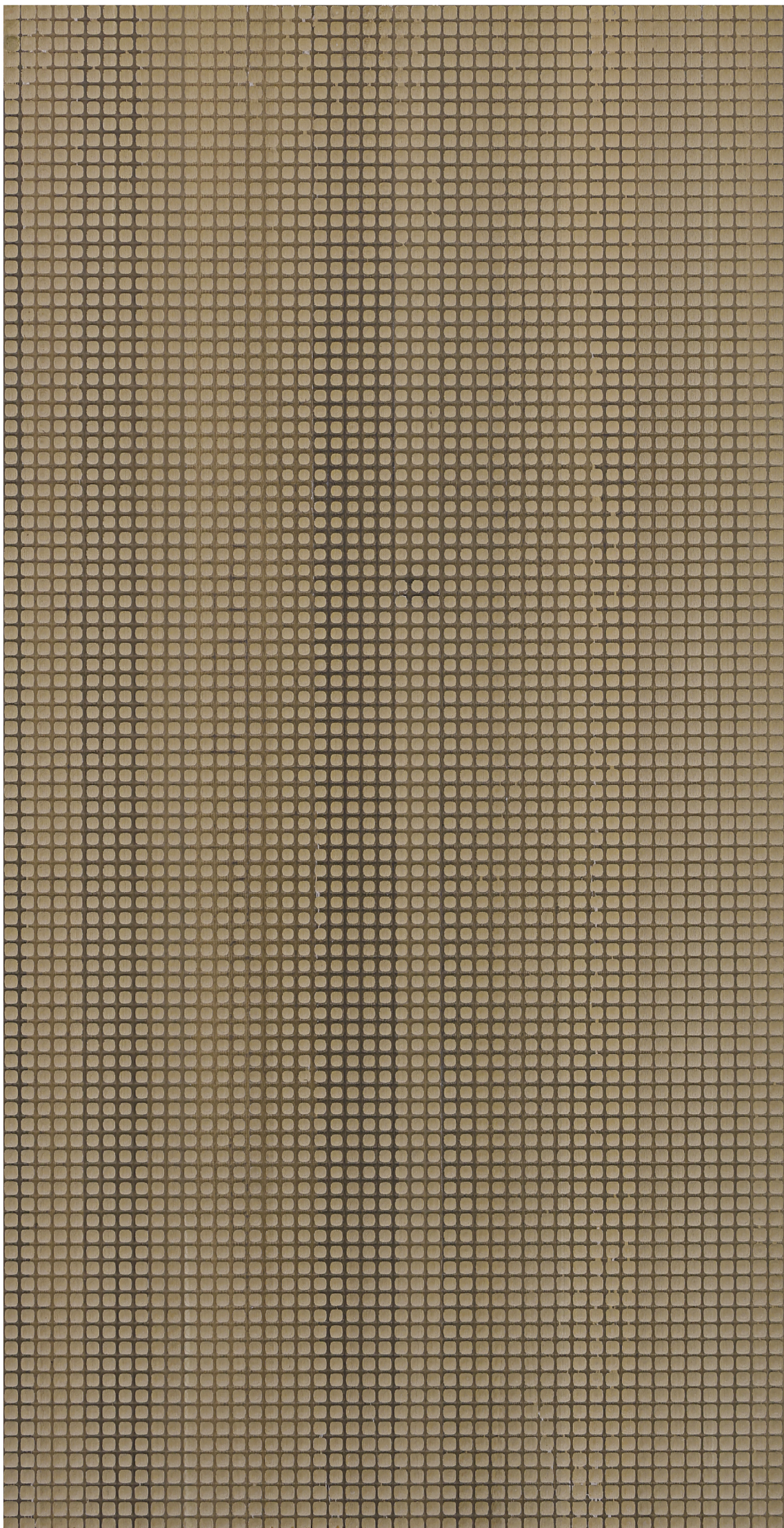
Formats : Plain Flexible



Scan for  
more details





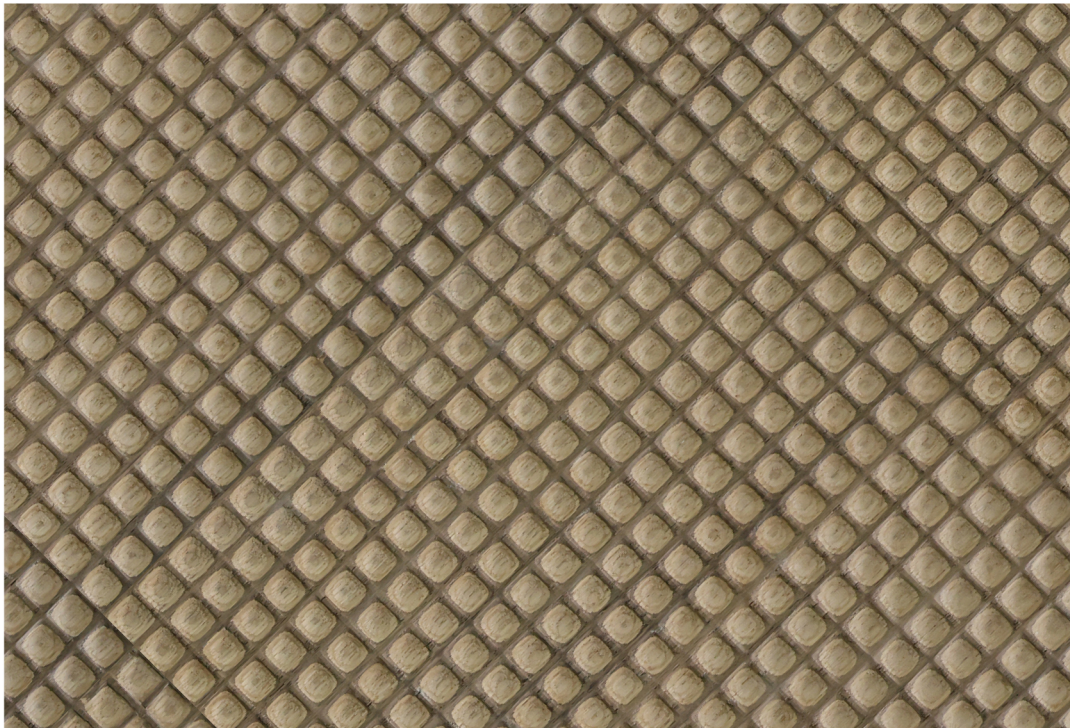


**C112-FF**

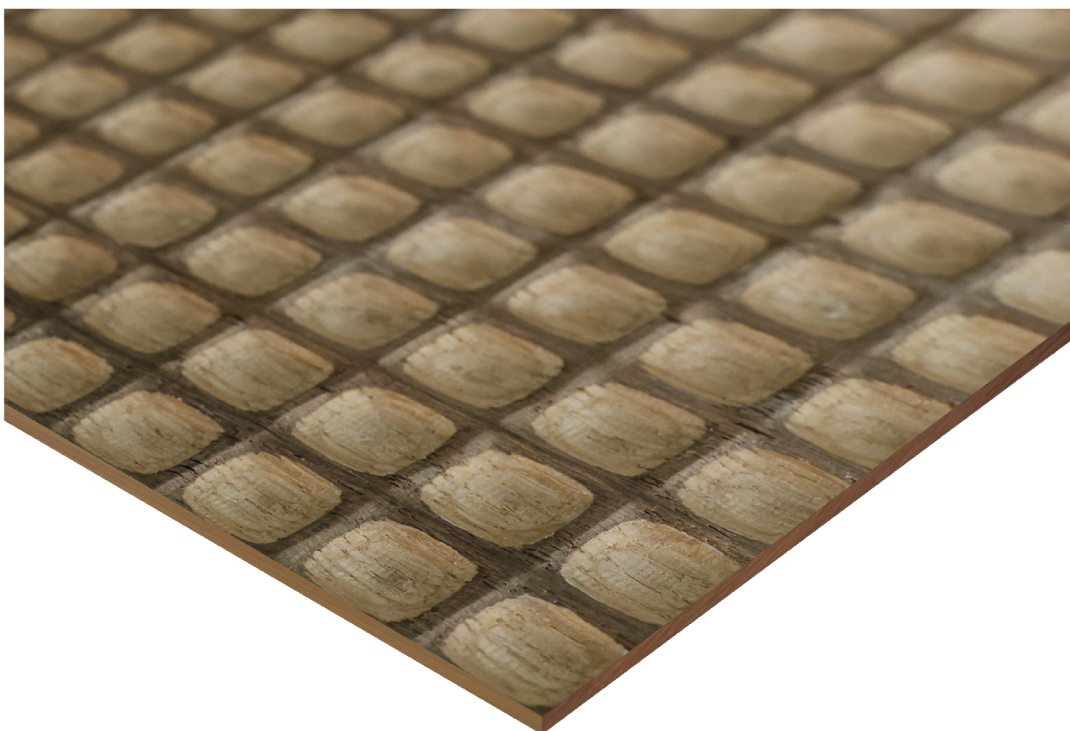


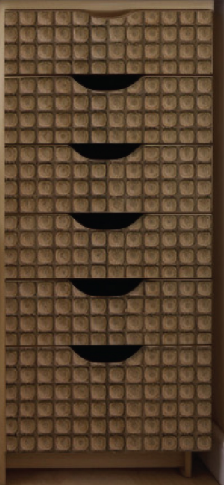
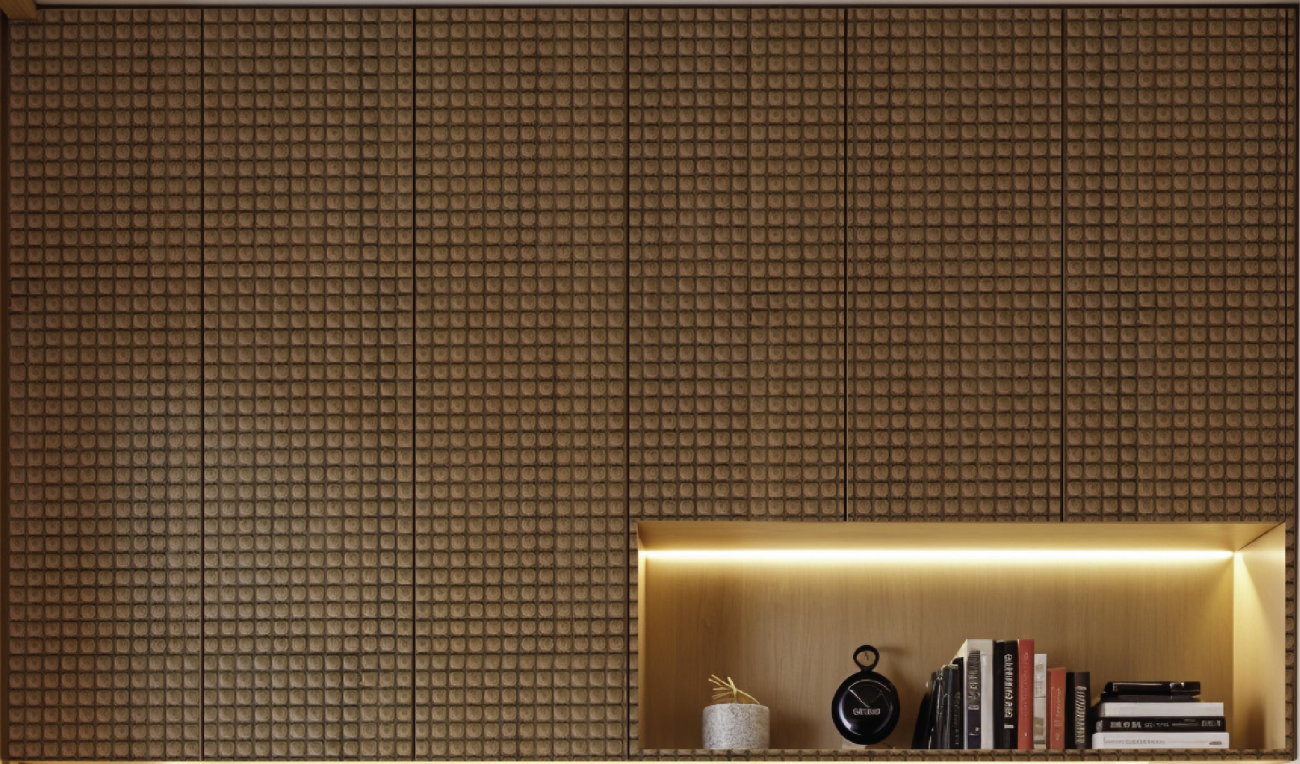
## Technical Details

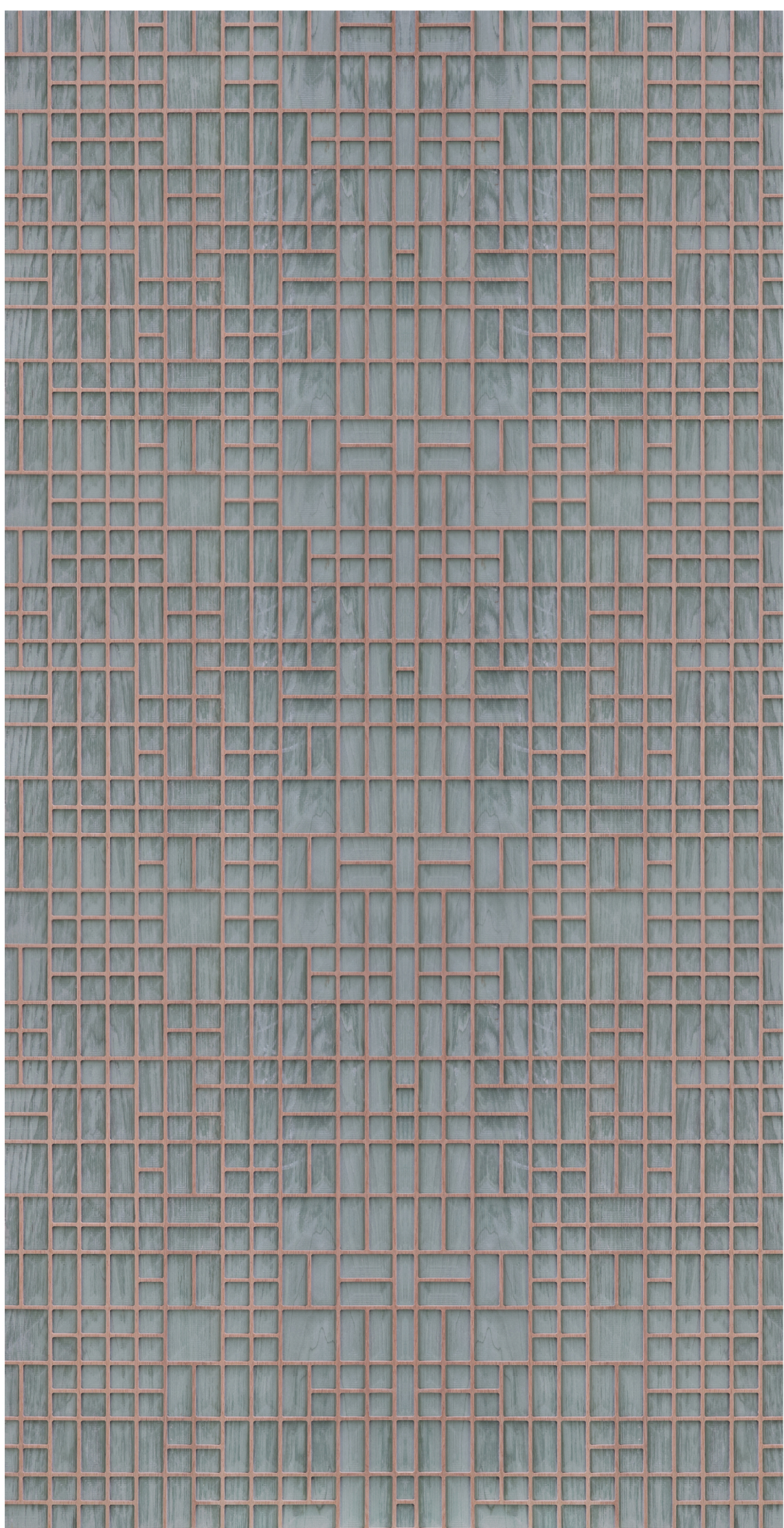
Wood Veneer Specie	: Natural
Veneer Layer	: 5 MM
Base	: Plywood Flexible
Weight	: 24 kgs
Panel size	: 8x4 ft 10x4 ft 12x4 ft
Finish	: Pre-Finished on Demand
Formats	: Plain Flexible



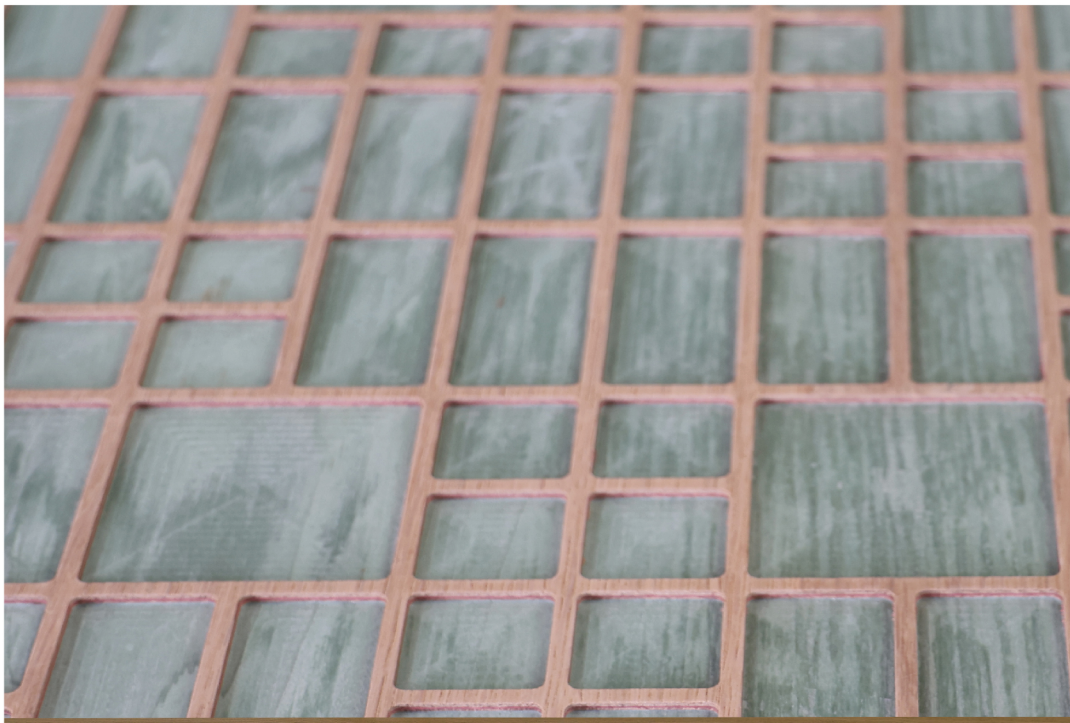
Scan for  
more details







**C116-FF**



## Technical Details

Wood Veneer Specie : Natural

Veneer Layer : 5 MM

Base : Plywood  
Flexible

Weight : 24 kgs

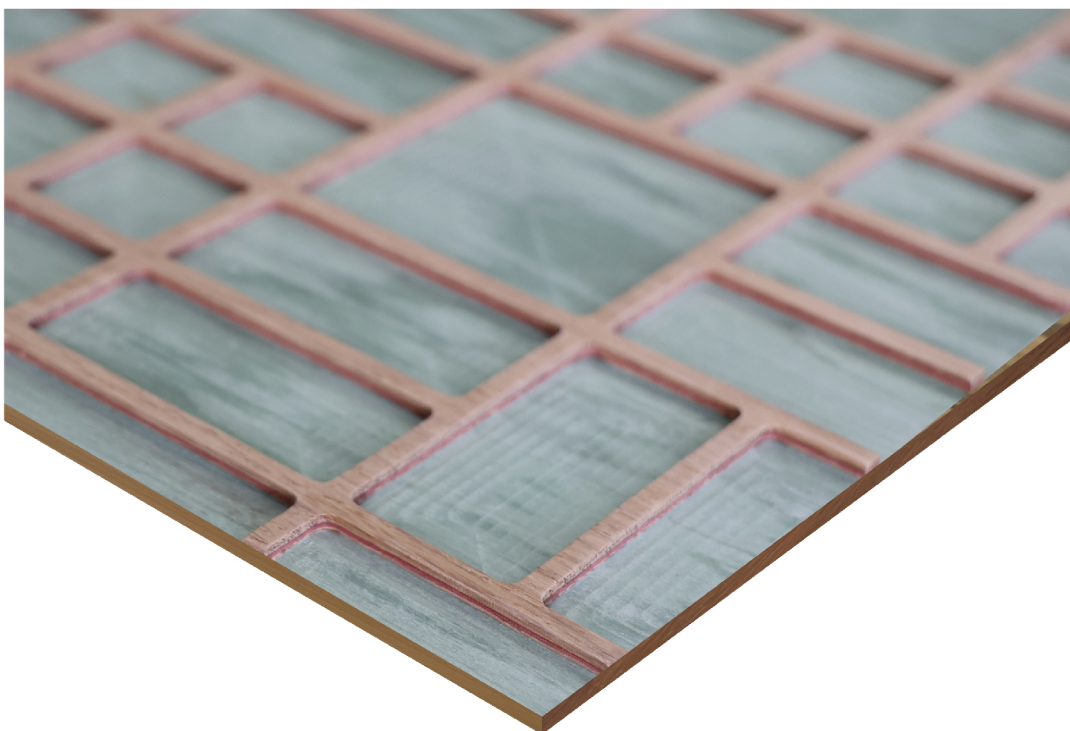
Panel size : 8x4 ft 10x4 ft  
12x4 ft

Finish : Pre-Finished  
on Demand

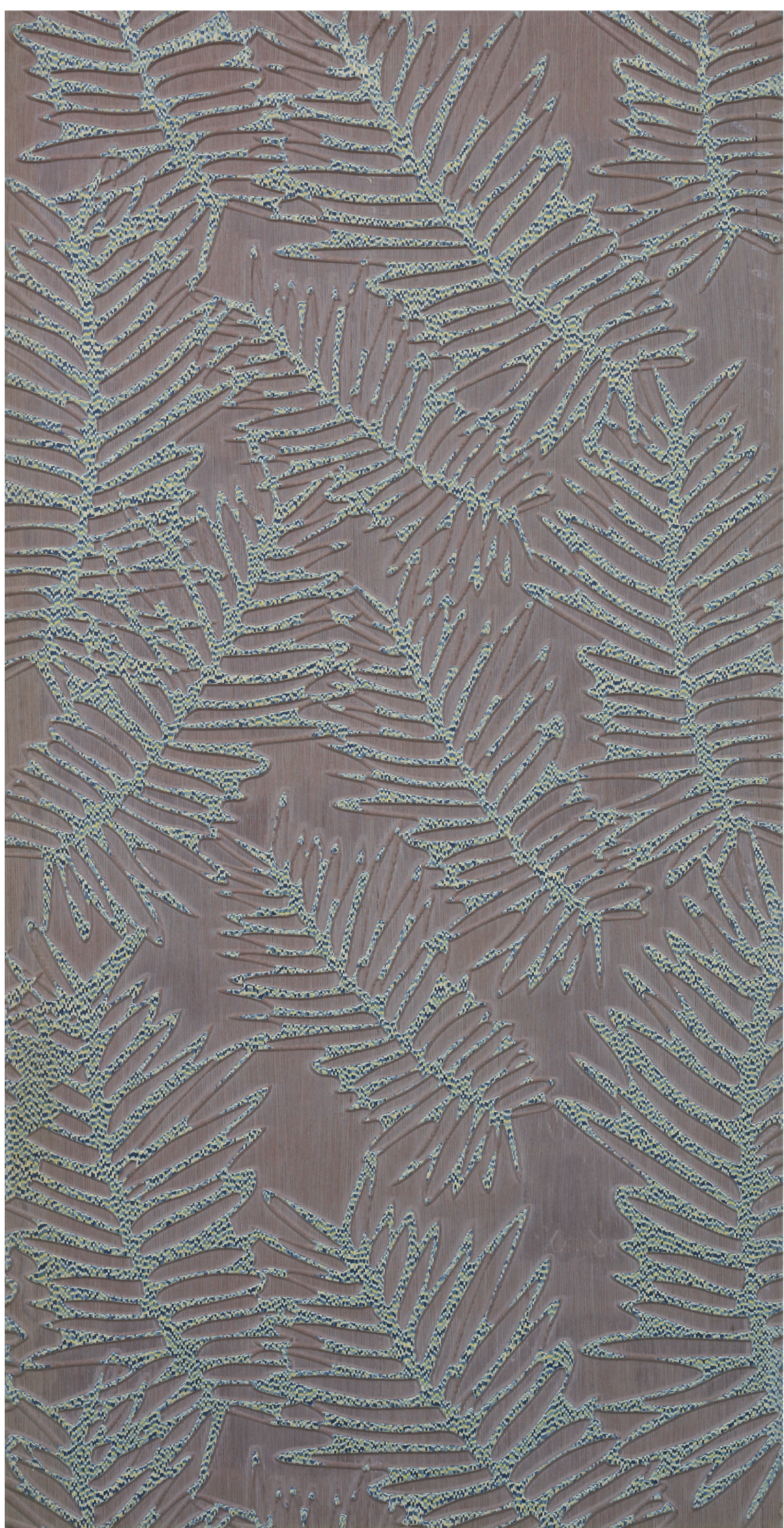
Formats : Plain Flexible



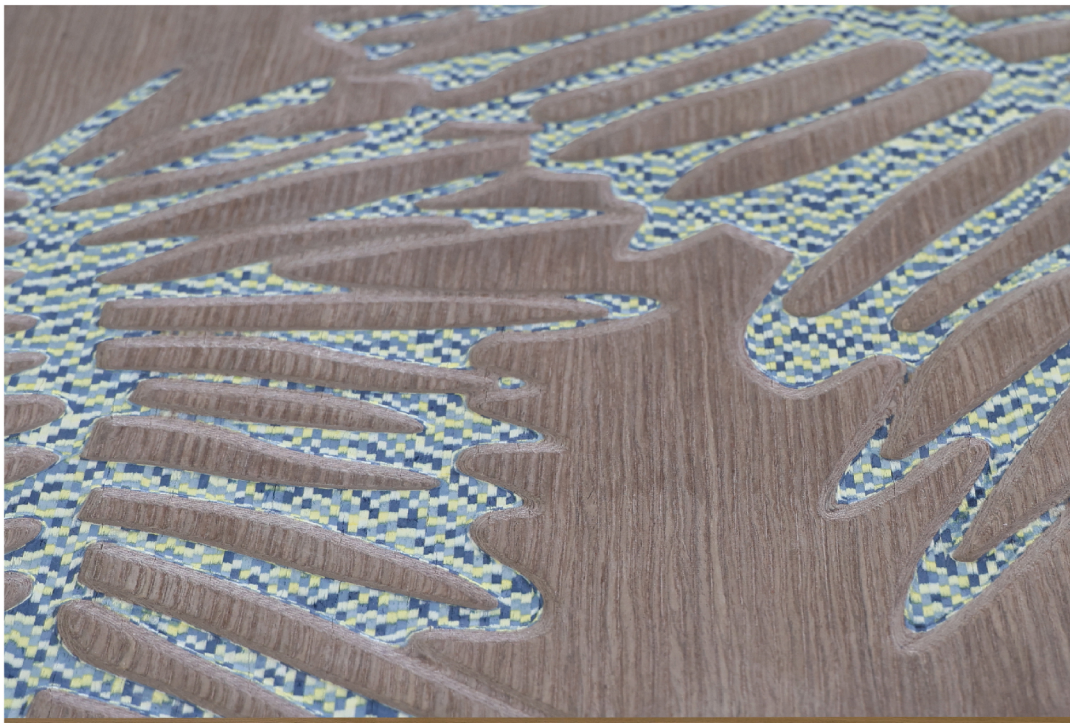
Scan for  
more details







**C137-FF**



## Technical Details

Wood Veneer Specie : Natural Hybrid

Veneer Layer : 5 MM

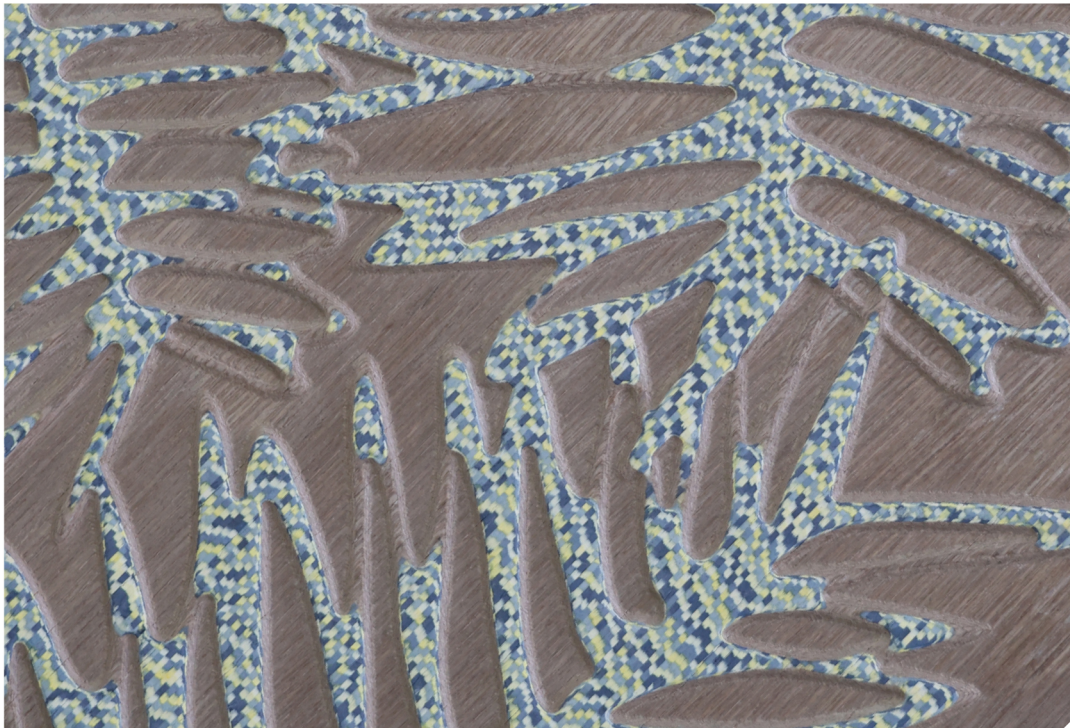
Base : Plywood  
Flexible Fleece

Weight : 24 kgs

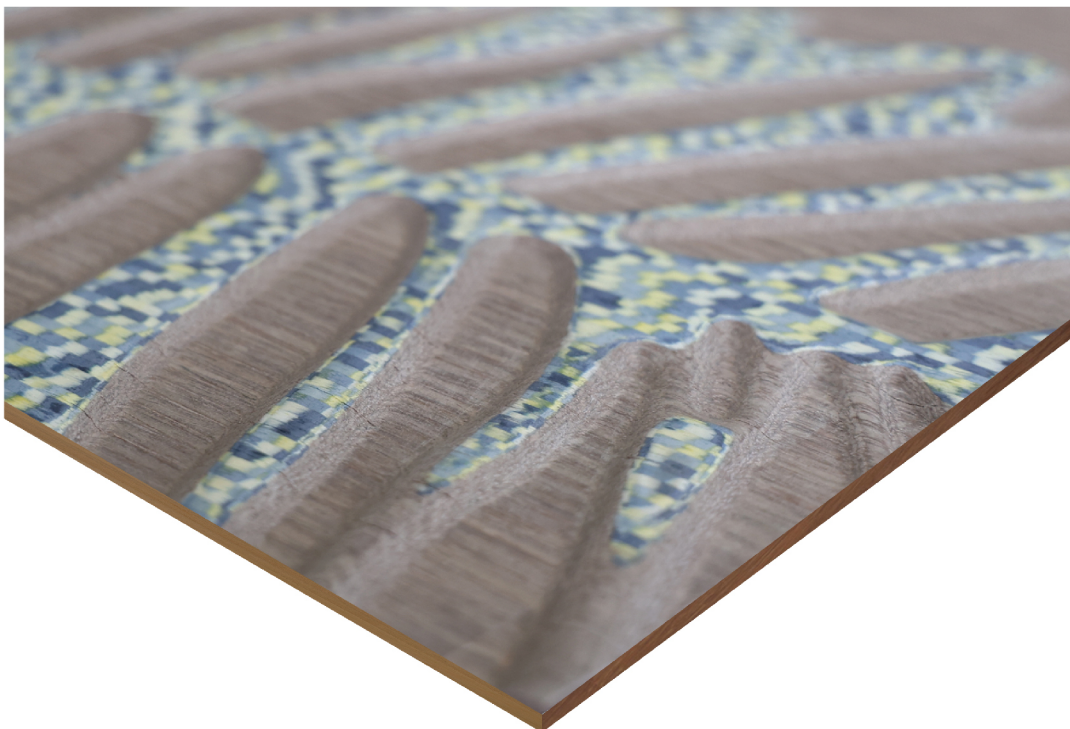
Panel size : 8 x 4 Ft

Finish : Pre-Finished  
on Demand

Formats : Plain Flexible



Scan for  
more details







**C178-FF**



## Technical Details

Wood Veneer Specie : Hybrid

Veneer Layer : 5 MM

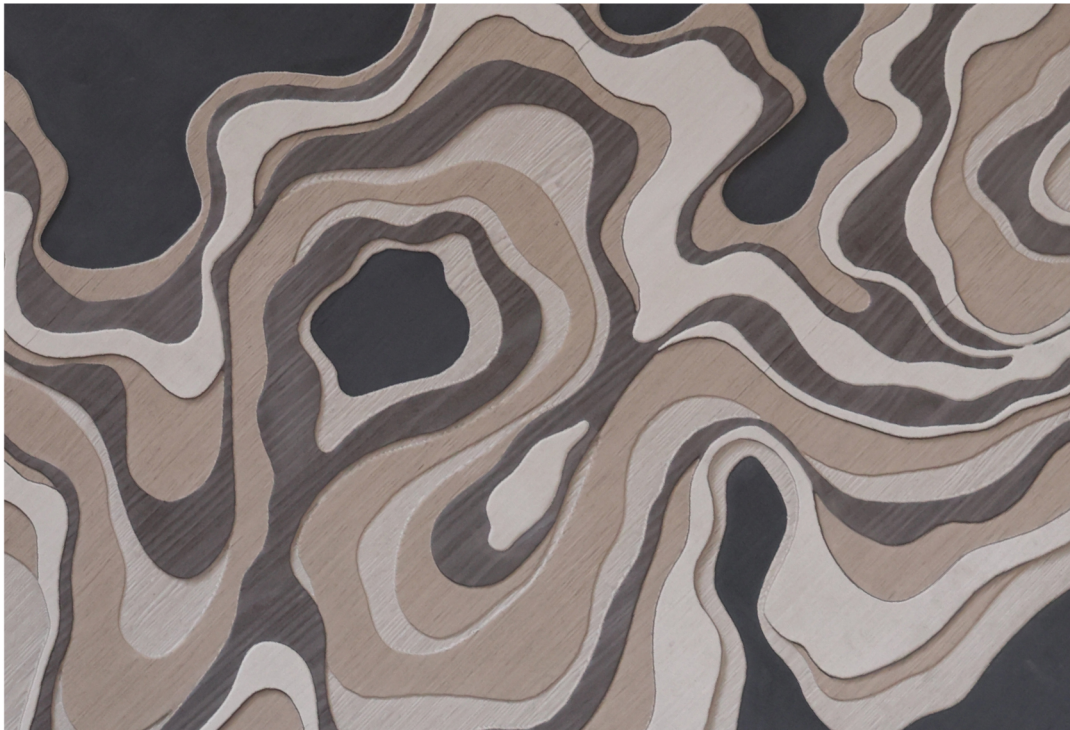
Base : 6 mm Plywood

Weight : 45 kgs

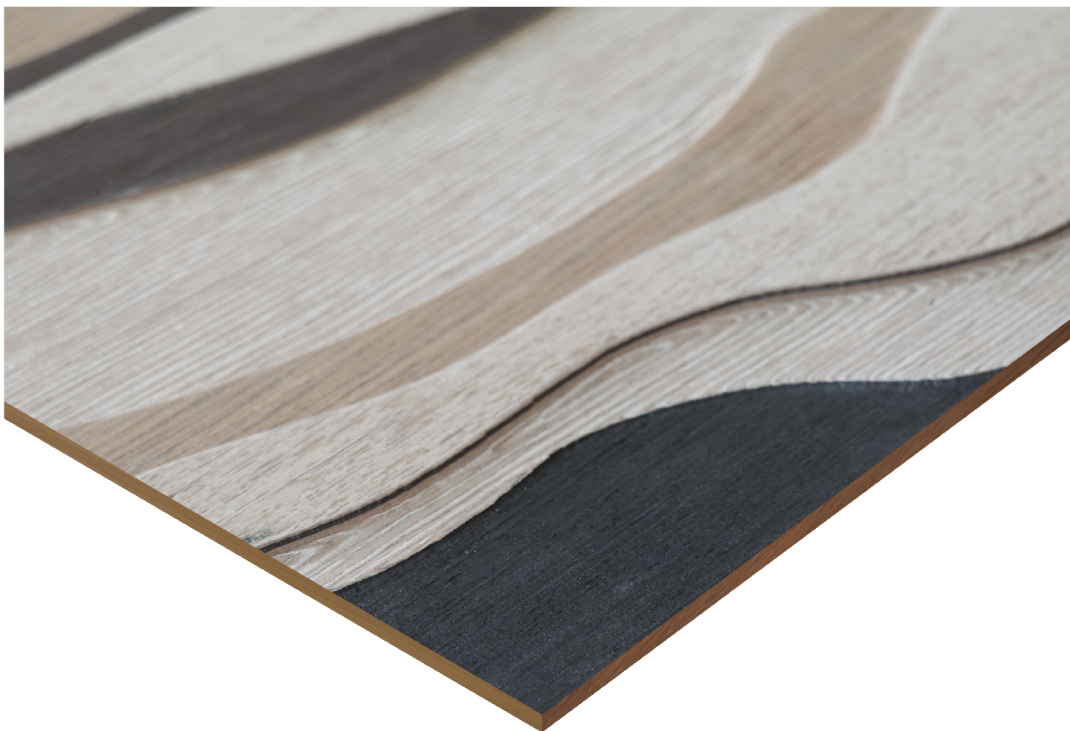
Panel size : 10 x 4 Ft

Finish : Pre-Finished  
on Demand

Formats : Plain



Scan for  
more details







**D005-FF**



## Technical Details

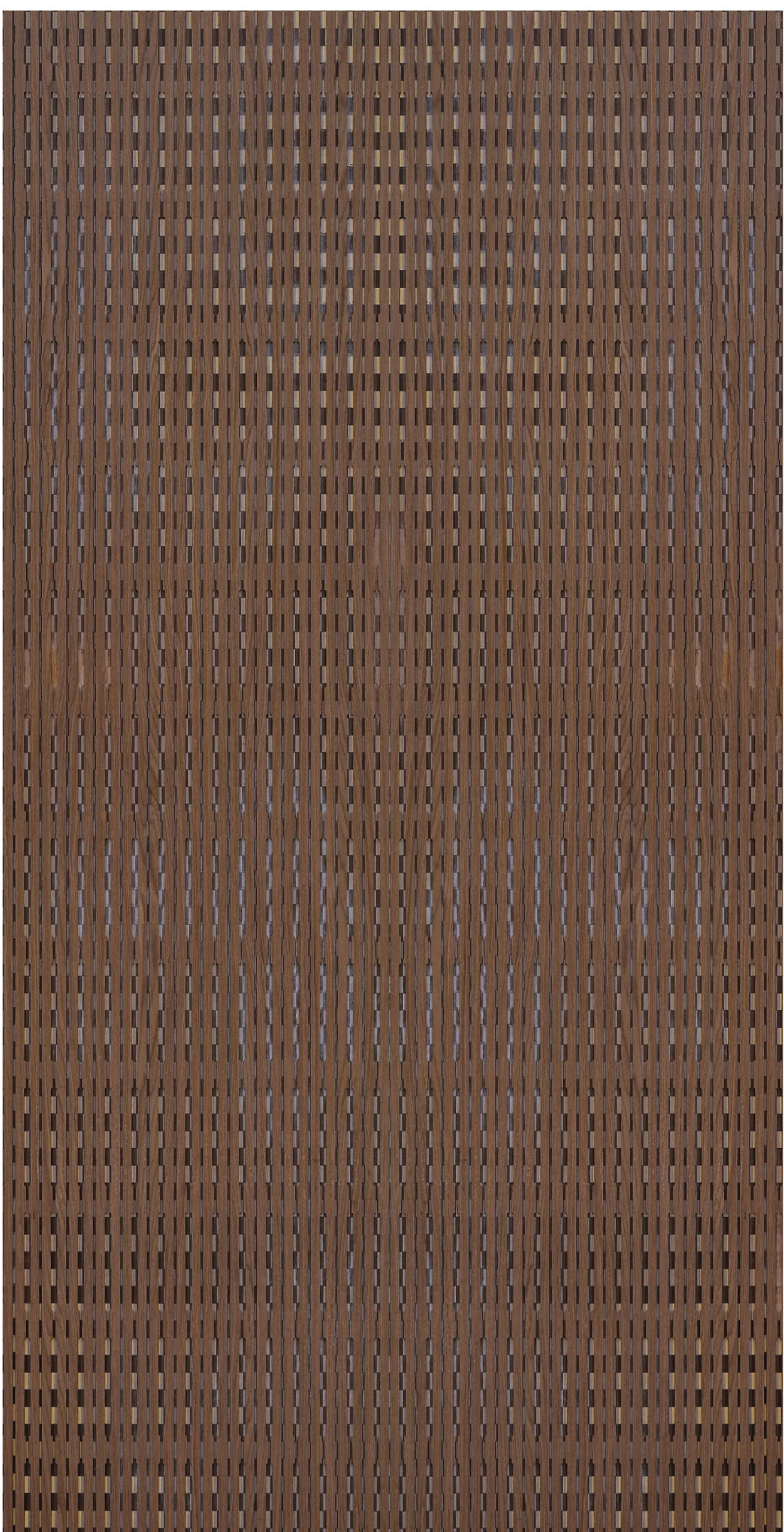
Wood Veneer Specie	: Hybrid
Veneer Layer	: 25 MM
Base	: Plywood
Weight	: 60 kgs
Panel size	: 10 x 4 Ft
Finish	: Pre-Finished on Demand
Formats	: Plain



Scan for  
more details







**C213-FF**



## Technical Details

Wood Veneer Specie : Hybrid

Veneer Layer : 5 MM

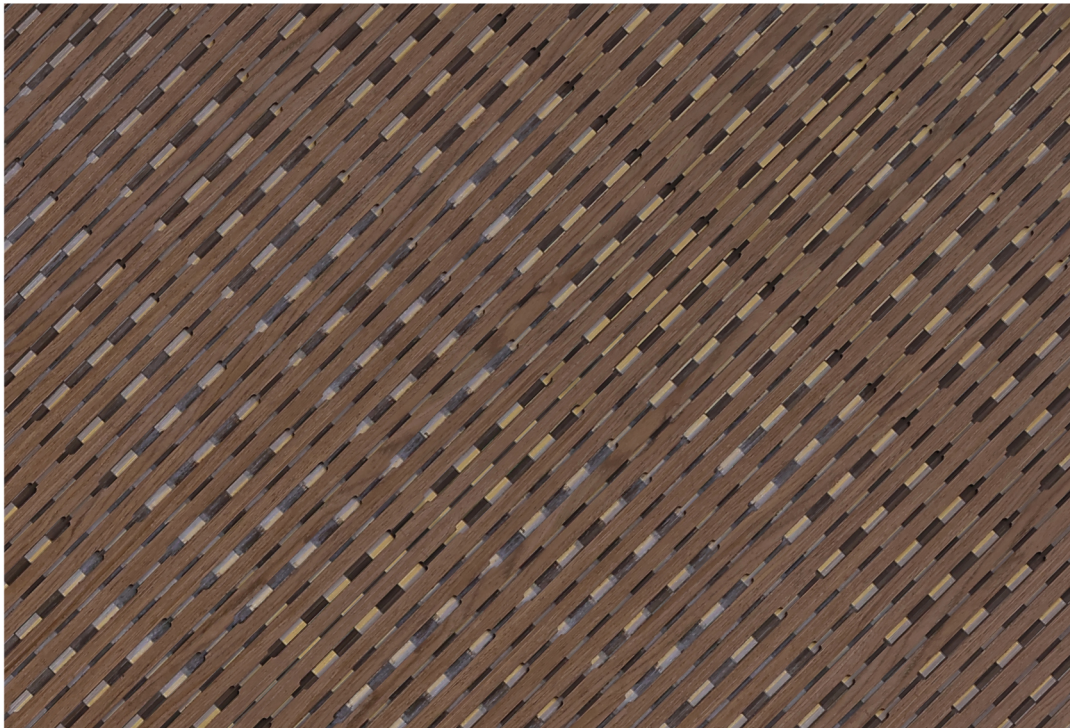
Base : Plywood /  
Flexible Fleece

Weight : 24 kgs

Panel size : 8 x 4 Ft / 10x4 Ft

Finish : Pre-Finished  
on Demand

Formats : Plain & Flexible



Scan for  
more details







**C280-FF**



## Technical Details

Wood Veneer Specie : Hybrid

Veneer Layer : 5 MM

Base : Plywood /  
Flexible Fleece

Weight : 24 kgs

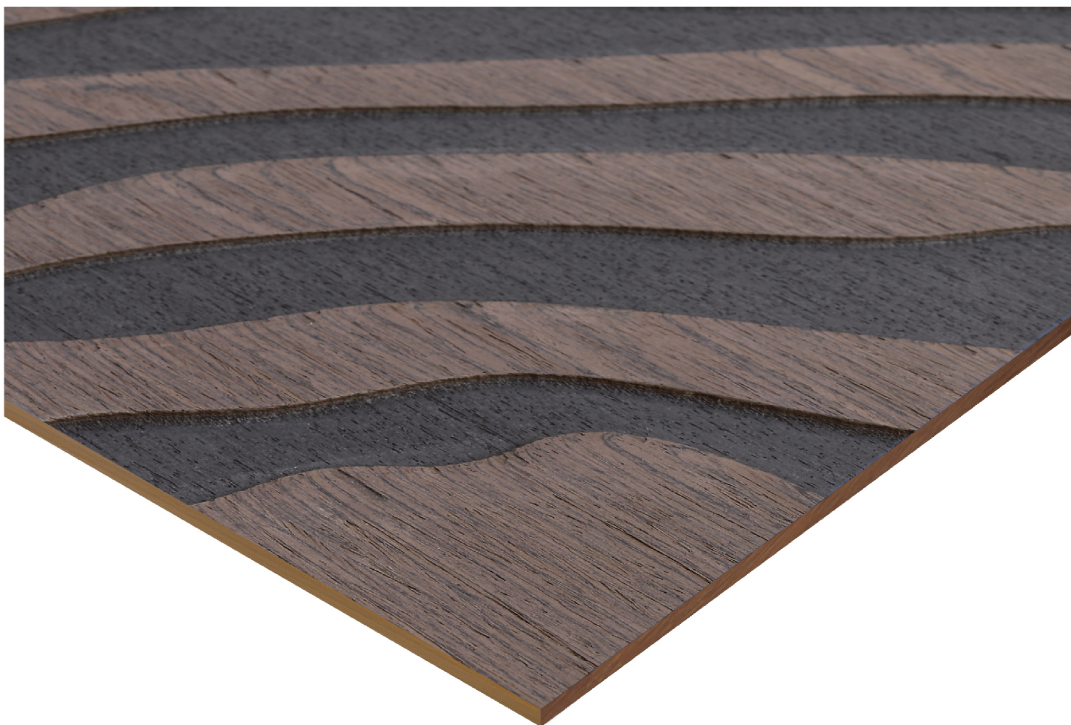
Panel size : 8 x 4 Ft / 10x4 Ft

Finish : Pre-Finished  
on Demand

Formats : Plain & Flexible



Scan for  
more details
















Scan me

# TURAKHIA OVERSEAS PRIVATE LIMITED ESTD 1992

 /naturalveneers  
 /naturalveneers  
 /naturalveneers

 /naturalveneers  
 /naturalveneers  
 /company/natural-veneers

 +91-91364 60666  
 info@naturalveneers.com  
 www.naturalveneers.com